

Industrial IP65 Embedded Mini Computer All in One Small PC with VGA WIFI HDM-I

Our Product Introduction

for more products please visit us on allinonepccomputers.com

Basic Information

- Place of Origin: Guangdong, China
- Brand Name: Wpna
- Minimum Order Quantity: 5set
- Price: \$277.20/pieces 1-49 pieces
- Packaging Details: carton, bubble bag, stetch film
- Supply Ability: 10000 Piece/Pieces per Month



Product Specification

- Products Status: Stock
- Type: Industrial Monitor
- CPU: J1900/I3/I5/I7/RK3288
- RAM: 2GB/4GB/8GB DDR3
- SSD: 32G/64G/128G/256G SSD
- Application: Industrial Application
- Operating System: Win 10/Android 8.1
- Interface: VGA/HDMI/USB/RJ45/COM/Audio
- WIFI: 300M Built-in Wifi
- Power Supply: DC12V/5A
- Warranty: 1 Year
- Sample: 10.4 Inch+J1900+4G+128G
- Highlight: DC12V 5A touch screen panel pc, Android 8.1 industrial touch screen pc, Wpna ip65 embedded mini computer



More Images



Product Description

wholesale new ip65 embedded mini computer cheap all in one small pc Industrial led monitor wide screen with VGA WIFI HDM-I

Products Description

Product features

- * System optional: android or win 10/11, linux, ubuntu or industrial monitor, Support customization
- * Mounting ways: desktop, VESA, Embedded, wall mounting, etc
- * 10 points capacitive touch/Resistive touch/non touch optional, High brightness optional

* A+ panel,seamless design,IP65 waterproof dustproof Explosion proof

* Simple And Smart Design All In One.

* 7/24 working

* Multiple I/O Port To Meet Customers Requirement.* Provide SDK,Support secondary development.

INDUSTRIAL LCD SCREEN EXCELLENT QUALITY

ADOPTING IMPORTED INDUSTRIAL A-STANDARD SCREEN,
LED BACKLIGHT HAS LOW POWER CONSUMPTION,
CLEAR DISPLAY, SATURATED BRIGHTNESS AND LONG SERVICE LIFE



BACKLIGHT
BRIGHTNESS
400cd/m²



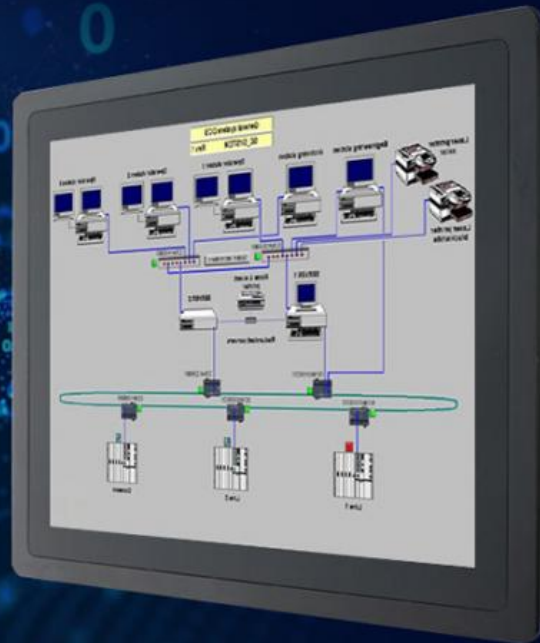
DYNAMIC COLOR
16.7M



CONTRAST
1000:1



BACK LIGHT
50000h





10 points
capacitive touch



aluminum
alloy design



good mute
effect



Heat
dissipation



Waterproof
front shell



Dustproof
design

Multiple sizes available
capacitive touch(standard), non touch(optional)
*Means resistive touch is available

Inch	Resolution	Ratio	Inch	Resolution	Ratio
10.4"	800*600	4:3(Square panel)*	13.3"	1366*768	16:9(Wide screen)
12.1"	1024*768	4:3(Square panel)*	18.5"	1920*1080	16:9(Wide screen)
17"	1280*1024	4:3(Square panel)*	15.6"	1366*768	16:9(Wide screen)
15"	1024*768	4:3(Square panel)*	21.5"	1920*1080	16:9(Wide screen)*
19"	1280*1024	4:3(Square panel)*	for other size, please contact pre-sales service.		

Powerful, efficient fanless and silent heat dissipation

Adopt aluminum alloy industrial grade circulating heat conduction system

Working temperature: -10°C – 60°C

Storage temperature: -20°C – 70°C

Fanless, silent heat dissipation



Anti-moisture



Oil-resistant



Anti-corrosion



IP65 Water- and Dust Proof

Its flat edge to edge glass front panels, and a patented silicone rubberized seal



Industrial Panel PC

Different configuration windows: J1900 i3 i5 i7

Linux

Android: RK3288 RK3399

Capacitive touch

Resistive touch



Windows 7



Windows 10



Android



Linux



Capacitive
touch screen



All in one
industrial pc



DIVERSIFIED INSTALLATION METHODS

Bayonet embedded bracket, wall bracket, hanging bracket, desktop (press buckle bracket, universal rotating bracket)



Wall mount



Snap embedded



Suspension installation



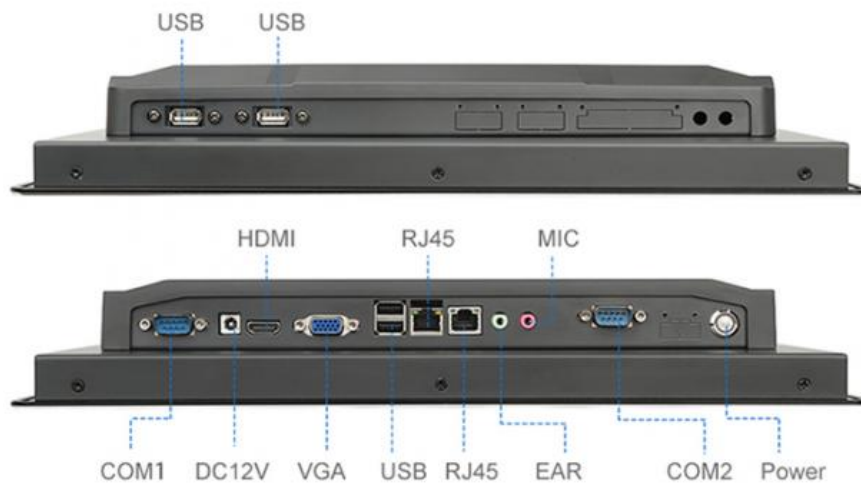
Desktop stand (press buckle stand)



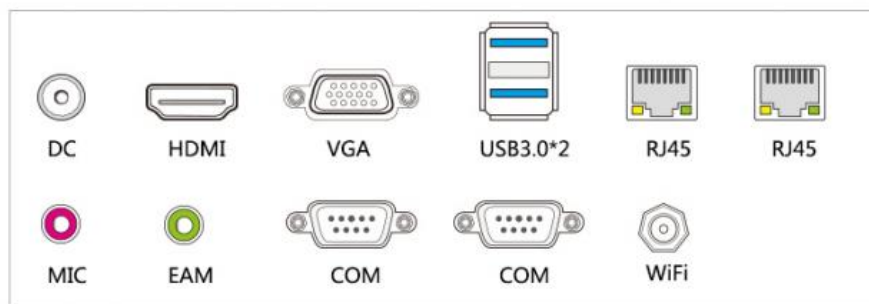
Universal optional bracket

Product Interface Diagram

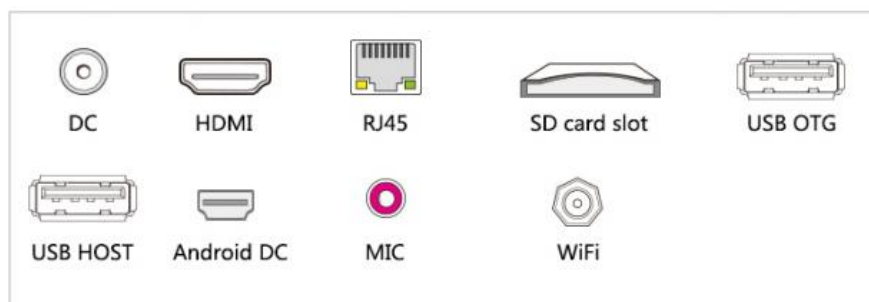
Multiple interfaces to meet your various needs



Windows industrial all in one panel pc ports



Android all in one panel pc ports



Products Show



Aluminum alloy design

Air circulation design



Dustproof design

Interface display



Suitable for all kinds of applications

Our products meet different scenarios and different environments



Production workshop



Medical equipment



Intelligent Express



monitoring system



Robot interface



CNC computer



industrial automation



industrial computer



Machine tool control

Application field

3mm ultra-thin seamless flat panel for embedded, closely fits the cabinet, industrial-grade standards, overall dustproof, IP65 waterproof, anti-corrosion, high and low temperature resistance, anti-electromagnetic interference.



Industrial intelligent cabinet

industrial control,CNC machine, production equipment,Cutting Machine ,etc



Commercial self-service equipment

Self-service vending machine,cash register, Bank,government hall,post office,etc



Smart city service equipment

Courier cabinet,Charging pile,Bar,Self parking payment ,Self-service car wash,Public outdoor equipment,etc



Medical equipment

Self-service appointment/payment/fetching /printing/medical imaging equipment , Medical mobile cart ,etc

Also can be used for power/security cabinets, Smart storage cabinets
Rail transit intelligent equipment, Visual inspection equipment, etc.

Packing list



Buyers' praise



<p>J***** United States</p>	<p>Supplier Service: Very satisfied (5 stars) On-time Shipment: Very satisfied (5 stars)</p> <p>Front panel IP65 21.5 22 inch sunlight readable outdo... ★★★★★ Excellent product and service! Excellent product and service</p>
<p>C*****a Thailand</p>	<p>Supplier Service: Very satisfied (5 stars) On-time Shipment: Very satisfied (5 stars)</p> <p>21.5 Inch touch screen monitor tablet touch panel kio... ★★★★★ on time Quality products Receive the product on time Quality products. Wait and see for long term use. Products Test</p>
<p>K***** Poland</p>	<p>Supplier Service: Very satisfied (5 stars) On-time Shipment: Very satisfied (5 stars)</p> <p>17Inch no RAM,no SSD no touch WIFI Bluetooth ★★★★★ Trusted supplier, good quality of products. Trusted supplier,good quality of products</p>
<p>C*****R South Africa</p>	<p>Supplier Service: Satisfied (4 stars) On-time Shipment: Satisfied (4 stars)</p> <p>High powerful Fanless Industrial computer I7/I5/I3 IP... ★★★★★ I am very happy with the leave of service from the company the quality of the product is really great. I will be standardising on this product for my projects. really great</p>
<p>O*****v United States</p>	<p>Supplier Service: Very satisfied (5 stars) On-time Shipment: Very satisfied (5 stars)</p> <p>15.6"Embedded (Non-touch) all in one panel pc ★★★★★ Great people! Great service! Great people Great service</p>

Screen

Screen size	10.4/12.1/13.3/15.6/18.5/ 21.5/23.6/27Inch (Optional)	Resolution	800*600P/1366*768P 1920*1080P
Aspect ratio	04:03/16:09	Display Type	TN

CPU

CPU	RK3288/RK3299 Intel J1900/ I3/I5/I7 (Optional)	Frequency	2.0GHz to 3.9GHz(Optional)
Hard disk	SSD 64G/128G/256G/512G (Optional)	Memory	2G/4G/8G/16G (Optional)
LAN	1000Mbit LAN+wifi	integrated Module	WIFI 802.11B/G/N Agreement,support 1000M

I/O Interface

Power port	×1	LAN	×1
Earphone-in jack	×1	VGA	×1
Microphone-out jack	×1	USB	×6

Power Adaptor

Input	100-240V AC ,50/60Hz Universal	Output	12V Direct Current ,6A,60W
-------	-----------------------------------	--------	----------------------------

Accessories

Power cable	×1	Power adaptor	×1
User'S manual	×1	Keyboard/Mouse	×1
Material	Mg-Al alloy base,ABS plastic shell		

Optional

support	External USB CD/DVD driver	support	Compatible with win7/8/10Linux
---------	-------------------------------	---------	-----------------------------------

Environment

Operating Temperature	0°C to 40°C	Storage Temperature	-20°Cto 60°C
-----------------------	-------------	---------------------	--------------

Certifications



Guangzhou Weipuna Technology Development Co., Ltd. is a factory manufacturer that mainly produces advanced high technology products of r& D, manufacturing and sales of all-in-one computer, mini pc, touch screen monitor, smart teaching& conference panel and laptop computer. Under joint efforts of our professional R& D technology team, we will commit to manufacturing and providing more high end products to global market in the future.



Company Information



Packing & Shipping







FAQ

Question 1: Can you put my brand name (logo) on these products?

Yes,.We can support OEM/ODM service, the process of customization is following:

- 1:provide your specific requirement. PC All In One Touchscreen
- 2:our design engineer draw the design draft.
- 3:you confirm the design draft.
- 4:we start produce it.

Question 2: How much do I need to pay for your OEM service?

over 50units we can support printing logo for you,over 100units we can Custom shell and packing box for you.

(about the OEM service fee is the customer pay)

Question 3: What payment method do you accept?

T/T,Western Union,Cash

Question 4: What is the Minimum Order Quantity(MOQ)?

We can sell one piece sample for your test.

Question 5: What is the lead time of your products?

1-3 days for one sample, 15 working days for a large quantity.

Recommend Products



Guangzhou Weipuna Technology Development Co., Ltd.

+86 135 4430 6128



allinonepccomputers.com

4th Floor, Building B7, Huachuang Animation Industrial Park, No. 9, Huateng Road, Shiji Town, Panyu District,
Guangzhou City, Guangdong Province, China