

## 15 Inch Industrial Tablet PC Computer With VGA HDMI USB RJ45 COM Audio 4G 128G Memory

Our Product Introduction

for more products please visit us on [allinonepccomputers.com](http://allinonepccomputers.com)

### Basic Information

- Place of Origin: Guangdong, China
- Brand Name: WPNA
- Certification: CE/FCC/RoHs/ISO9001/CCC
- Minimum Order Quantity: 5 units
- Price: Negotiable
- Packaging Details: carton, bubble bag, stecth film
- Delivery Time: 15-30 WORKDAYS
- Payment Terms: L/C, D/A, D/P, T/T, Western Union, MoneyGram
- Supply Ability: 10000 Piece/Pieces per Month



### Product Specification

- Product Name: Embedded Computer
- CPU: I3/i5/i7 Optional
- RAM: 4GB/8GB/16GB/32GB Optional
- SSD: 128G/256G/512G/1TB/2TB
- Operating System: Windows 10/11/Ubuntu/Linux/Android
- Interface: VGA/HDMI/USB/RJ45/COM/Audio
- Warranty: 1-Year
- After-sales Service: Call Center And On-line Technical Support, Onsite Training And Inspection, Free Spare Parts, Return And Replacement, Repair, Others
- Highlight: **DC12V 5A industrial tablet pc computer, j1900 quad core tablet for industrial use, wpna tablet pc industrial**



### More Images



## Product Description

### 15 Inch Industrial Tablet PC Computer With VGA HDMI USB RJ45 COM Audio 4G 128G Memory

#### Usage

Intelligent production line control: realize the coordinated operation of automated equipment and optimize the production process  
Precision machining monitoring: real-time collection of CNC machine tool operation data and process parameters  
Flexible manufacturing management: support rapid switching of production of multiple products  
Industrial safety monitoring: integrated gas/temperature and humidity sensors to achieve hazard warning  
Packaging automation: intelligently identify product specifications and control the operation of packaging machinery  
Power system management: substation equipment status monitoring and fault diagnosis platform  
Experimental data collection: centralized processing and analysis of scientific research instrument operation data

#### Selling Points

**Military-grade protection:** MIL-STD-810G certified, impact-resistant, corrosion-resistant, and adaptable to harsh industrial environments

**Wide temperature and voltage operation:** -30 ~70 stable operation, support 9~36V wide voltage input, adapt to power fluctuations

**Fully sealed design:** IP69K protection level, dustproof and waterproof, can withstand high-pressure washing

**Multi-protocol compatibility:** integrated with mainstream industrial protocols such as Modbus and PROFINET, worry-free device access

**Modular expansion:** supports flexible expansion of PCIe/5G/AI acceleration modules to meet future upgrades

**Intelligent cooling system:** fanless design, efficient heat conduction, ensuring long-term high-load operation

**Industrial-grade touch:** support glove/wet hand operation, visible under strong light, strong anti-interference

**Edge computing capabilities:** local real-time data processing, reduce cloud dependence, and respond faster

**Long-term support:** 10-year supply guarantee for key components to reduce maintenance costs

**Deep customization:** size, interface, and function customization on demand to meet the needs of special industries

#### Theory

The industrial control all-in-one machine adopts industrial-grade hardware architecture, integrates multi-protocol communication interfaces and real-time control algorithms, ensures stable operation through signal isolation and anti-interference design, supports modular expansion and edge computing functions, and meets the needs of data collection, equipment control and intelligent decision-making in complex industrial scenarios.

#### Technology

The industrial control all-in-one machine adopts aerospace-grade magnesium alloy one-piece die-cast frame, which is formed by precision CNC processing and laser seamless welding; the surface is formed by a micro-arc oxidation process to form a nano-ceramic layer to achieve IP69K-level triple-proof protection; the interior adopts a suspended shock-absorbing structure and vacuum potting technology, and has passed 2000 hours of salt spray test and 100G impact verification; it supports flexible customization of the entire body size, interface type and protection level, and is suitable for extreme industrial scenarios such as nuclear power and deep sea.

Parameter		
Product form	Product name	Industrial Tablet PC
	size	10.4/12.1/13.3/15.6/18.5/21.5/23.6/27Inch
	Overall weight	3-7KG
CPU	Intel	J1900/I3/I5/I7(Optional)
GPU	integrated graphics	Intel HD Graphics
RAM	DDR3	4G/8G/16G (Optional)
SSD	MSATA SSD	128G/256G/512G (Optional)
display	15.6Inch	Resolution 1920*1080 scale 16:9/4:3 (Optional)
HDMI port	Audio and video output	HDMI support 1080P 60Hz 2K 60Hz 4K 30Hz
VGA port	Audio and video output	VGA support 1080P
COM port	Data input and output	One or more than two (optional)
Standard accessories		
enclosure	Standard configuration	
	The power adapter x1	12V
	power cord x1	

#### Products Description

- \* System optional: android 5.1,6.0,7.1,9.0,10.0 OR winXP/7/8/10,linux,ubuntu or industrial monitor,Support customization
- \* Mounting ways: desktop,VESA,Embedded,wall mounting,etc
- \* 10 points capacitive touch/Resistive touch/non touch optional,High brightness optional
- \* A+ panel,seamless design,IP65 waterproof dustproof Explosion proof
- \* Simple And Smart Design All In One.
- \* 7/24 working
- \* Multiple I/O Port To Meet Customers Requirement.\* Provide SDK,Support secondary development.

## NO DEAD ENDS, PURE PLANAR CAPACITIVE TOUCH SENSITIVE AND MORE ACCURATE

PURE PLANE, NO DEAD CORNERS, NO BLIND SPOTS, TEMPERATURE-SENSITIVE  
TOUCH, FAST RESPONSE, FIVE DRIFTS, NO DEAD SPOTS, HIGH OPERATING EFFICIENCY



### ● A variety of gestures, you can swipe as you want



Two fingers  
slide down



Two fingers  
slide up



Two fingers  
to the right



Two fingers  
to the left



Two fingers  
to rotate left



Two fingers  
to rotate right



10 points  
capacitive touch



aluminum  
alloy design



good mute  
effect



Heat  
dissipation



Waterproof  
front shell



Dustproof  
design

Multiple sizes available  
capacitive touch(standard), non touch(optional)  
\*Means resistive touch is available

Inch	Resolution	Ratio	Inch	Resolution	Ratio
10.4"	1024*768	4:3(Square panel) <sup>*</sup>	17"	1280*1024	4:3(Square panel) <sup>*</sup>
12.1"	1024*768	4:3(Square panel) <sup>*</sup>	18.5"	1366*768	16:9(Wide screen)
13.3"	1920*1080	16:9(Wide screen)	19"	1280*1024	4:3(Square panel) <sup>*</sup>
15"	1024*768	4:3(Square panel) <sup>*</sup>	21.5"	1920*1080	16:9(Wide screen) <sup>*</sup>
15.6"	1920*1080	16:9(Wide screen)	for other size, please contact pre-sales service.		

# Multiple Size

Flexiable Installation





# Industrial Panel PC

Different configuration windows: J1900 i3 i5 i7

Linux

Android: RK3288 RK3399

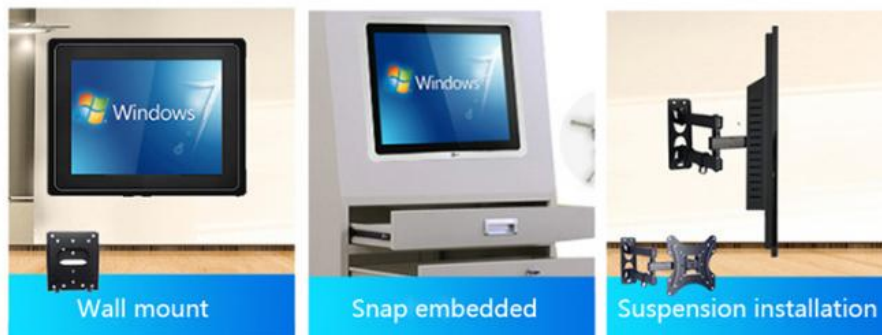
Capacitive touch

Resistive touch



## DIVERSIFIED INSTALLATION METHODS

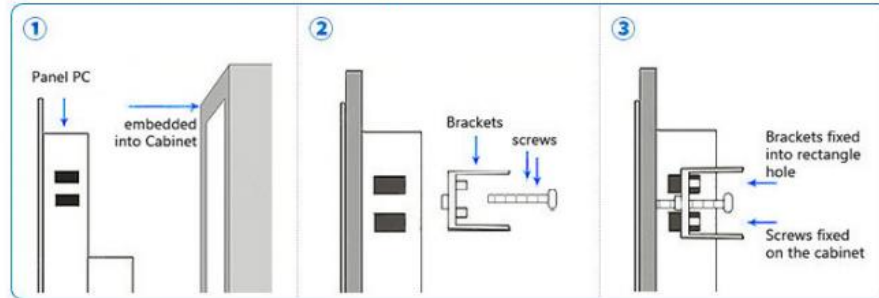
Bayonet embedded bracket, wall bracket, hanging bracket, desktop (press buckle bracket, universal rotating bracket)



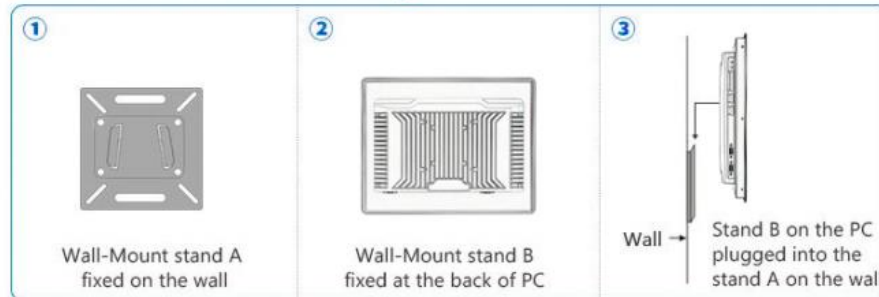
# Installation Method

A variety of installation methods can be applied to different scenarios

## Embedded installation steps:



## Wall-Mount installation steps:



Picture of Embedded installation



Wall-Mount installation



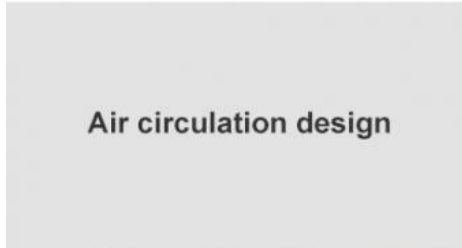
Wall-Mount long stand installation

# Products Show

---



Aluminum alloy design



Air circulation design



Dustproof design



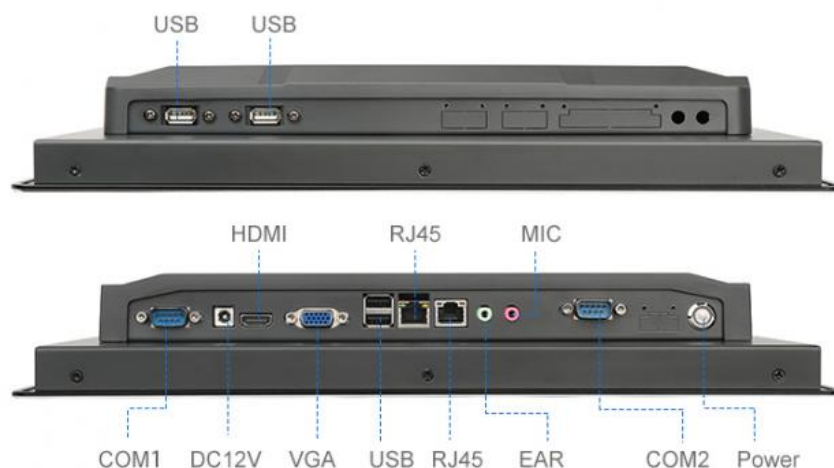
Interface display





# Product Interface Diagram

Multiple interfaces to meet your various needs



### SOURCE MANUFACTURER STRENGTH CUSTOMIZATION

PROFESSIONAL CUSTOMIZATION, PROVIDE SOLUTIONS,  
PLEASE CONTACT SALES CUSTOMER SERVICE BEFORE CUSTOMIZATION

<p>Motherboard customization</p>	<p>Interface customization</p>	<p>Appearance customization</p>	<p>Bracket customization</p>	<p>Touch screen customization</p>
<p>Built-in WIFI module</p>	<p>IC/ID card reader</p>	<p>NFC card reader</p>	<p>Configuration upgrade</p>	<p>ID card reader</p>
<p>LOGO customization</p>	<p>System customization</p>	<p>Built-in Bluetooth</p>	<p>Built-in camera</p>	<p>Scanner</p>
<p>Built-in microphone</p>	<p>Environment customization</p>	<p>Power customization</p>	<p>Beidou/GPS dual positioning</p>	<p>Fingerprint recognition</p>

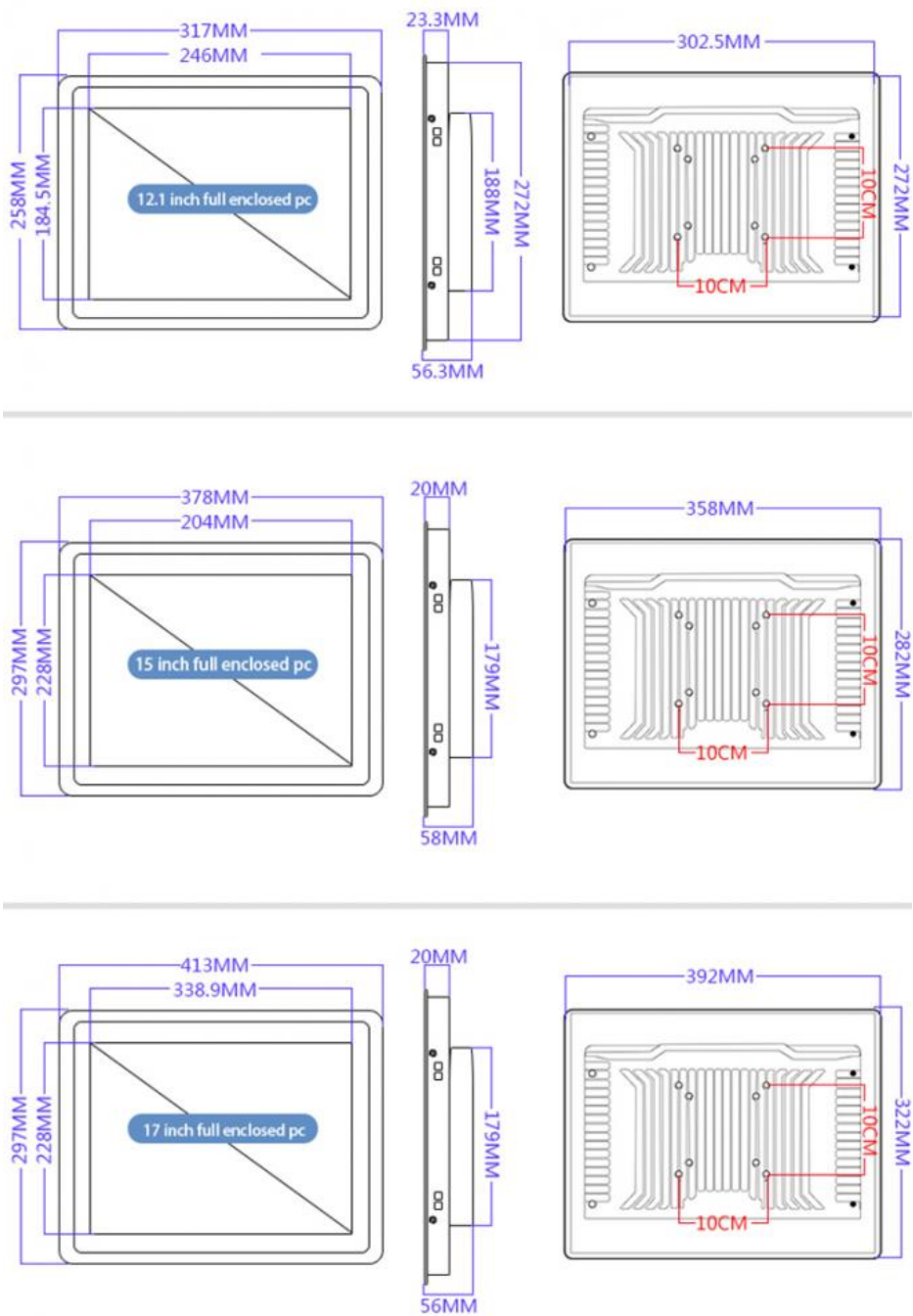
Appearance customization    Configuration upgrade    Modular installation

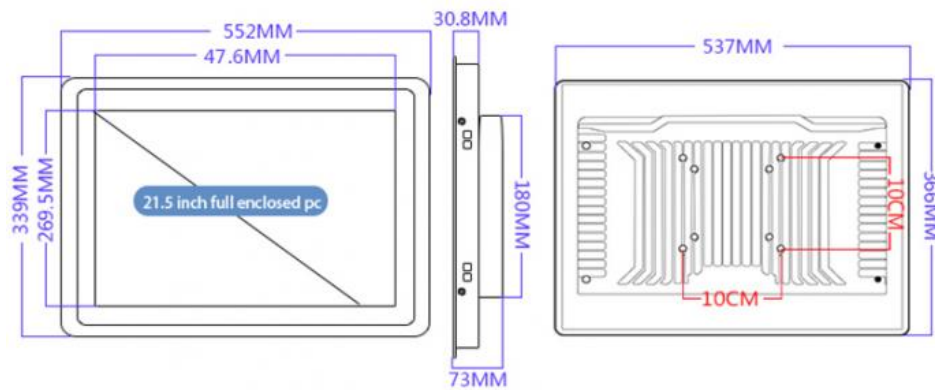
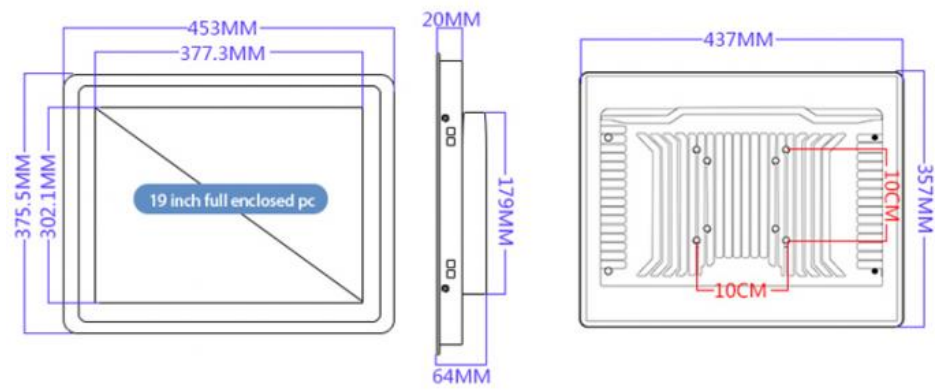
Interface customization    Environment customization

# PRODUCT SIZE DISPLAY DRAWING

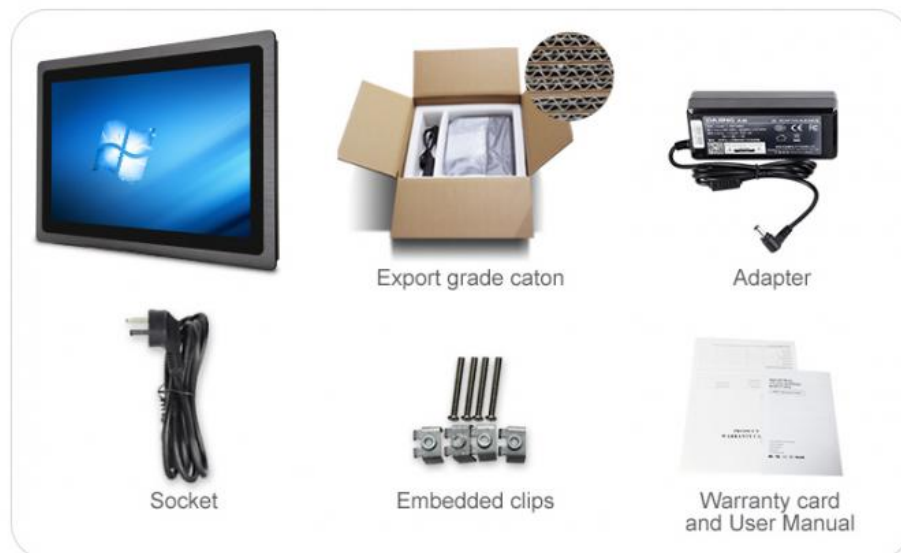


NOTE: MANUAL MEASUREMENT CANNOT AVOID THE ERROR OF 1-2MM, PLEASE REFER TO THE ACTUAL PRODUCT!





## Packing list



## Certifications



## Company Information

Guangzhou Weipuna Technology Development Co., Ltd. is a factory manufacturer that mainly produces advanced high technology products of R&D, manufacturing and sales of all-in-one computer, mini pc, touch screen monitor, smart teaching & conference panel and laptop computer. Under joint efforts of our professional R&D technology team, we will commit to manufacturing and providing more high end products to global market in the future.



## COMPANY PROFILE



Guangzhou Weipuna Technology Development Co., Ltd. is a factory manufacturer that mainly produces advanced high technology products of R&D, manufacturing and sales of all-in-one computer, mini PC, touch screen monitor, smart teaching & conference panel and laptop computer. It is an integrity of factory and office with an area of over 2,000 square meters. Neat and huge work flow, well-trained and qualified

staff enormously secure smooth and efficient production. Compared with traditional computer, our all-in-one computer and mini PC embody in obvious highlights of light weight, compact size, easy to carry, stable and powerful function, low consuming of electricity and radiation, healthy and friendly to environment. Our products have not only been widely applied to business, home leisure, commercial and industrial control use and finance end service, but also exported to many overseas countries, earning excellent reputations from customers. Under joint efforts of our professional R&D technology team, we will commit to manufacturing and providing more high end products to global market in the future

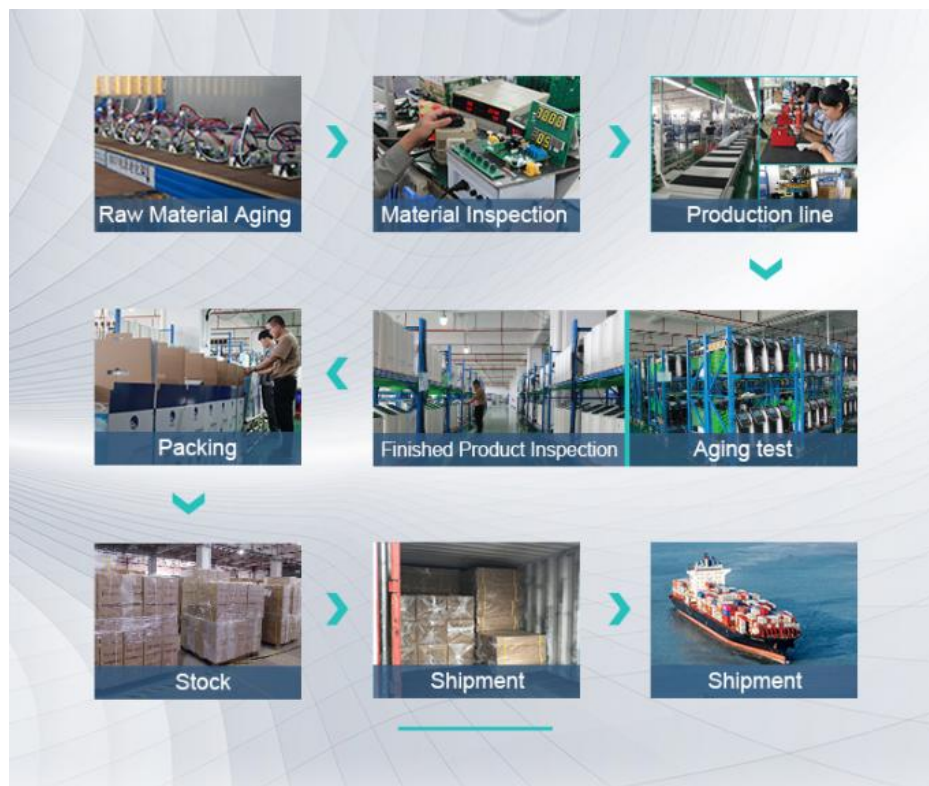




**Packing & Shipping**









## FAQ

Question 1: Can you put my brand name (logo) on these products?

Yes. We can support OEM/ODM service, the process of customization is following:

1: provide your specific requirement.

2: our design engineer draw the design draft.

3: you confirm the design draft.

4: we start produce it.

Question 2: How much do I need to pay for your OEM service?

over 50 units we can support printing logo for you, over 100 units we can Custom shell and packing box for you.

(about the OEM service fee is the customer pay)

Question 3: What payment method do you accept?

T/T, Western Union, Cash

Question 4: What is the Minimum Order Quantity (MOQ)?

We can sell one piece sample for your test.

Question 5: What is the lead time of your products?

1-3 days for one sample, 15 working days for a large quantity.



**Guangzhou Weipuna Technology Development Co., Ltd.**



+86 135 4430 6128



[allinonepccomputers.com](http://allinonepccomputers.com)

4th Floor, Building B7, Huachuang Animation Industrial Park, No. 9, Huateng Road, Shiji Town, Panyu District,  
Guangzhou City, Guangdong Province, China