

All In One PC 23.8 Inch With I7 Processor 8GB RAM And 1920x1080 Display Resolution

Our Product Introduction

for more products please visit us on allinonepccomputers.com

Basic Information

- Place of Origin: Guangdong, China
- Brand Name: WPNA
- Certification: CE/FCC/RoHs/ISO9001/CCC
- Model Number: L24
- Minimum Order Quantity: 25 units
- Price: Negotiable
- Packaging Details: carton, bubble bag, stretch film
- Delivery Time: 15-30 WORKDAYS
- Payment Terms: L/C, D/A, D/P, T/T, Western Union, MoneyGram
- Supply Ability: 10000 Piece/Pieces per Month



Product Specification

- Processor Brand: Intel
- Series: For Office
- CPU: I3/i5/i7
- RAM: 4GB/8GB/16GB/32GB Optional
- HDD/SSD: 128GB/286GB/512GB/1TB/2TB
- OS: Compatible With Win7/8/10/11/Linux
- Plugs Type: US, JP, CN, AU, UK, EU
- Display Resolution: 1920x1080
- Graphics Card Type: Dedicated Card
- Display Ratio: 16:9
- Screen Type: Widescreen
- Mouse & Keyboard: Yes
- Warranty(Year): 1-Year
- After-sales Service: Call Center And On-line Technical Support, Onsite Training And Inspection, Others



More Images



Product Description

Stand all-in-one pc 23.8 inch i7 8gb mini desktop barebone system curved computer i3 i5

Product Description

Designed for home entertainment, this all-in-one computer has a wide viewing angle and vivid colors, making the viewing experience even better. The touch screen increases interactivity and makes operation more intuitive and convenient, especially suitable for family members to share.

The first choice of business elites, this all-in-one computer has advanced security features to protect sensitive data from threats. Its fast startup and instant wake-up functions allow business people to work efficiently and stay competitive anytime, anywhere.

The new favorite in the education field, this all-in-one computer has a sturdy shell and splash-proof design, which is perfect for classroom environments. Its multi-touch function supports interactive teaching, stimulating students' interest and participation in learning.

Product Show



Front



Side



Specification

Model	I24
Size	23.8inch
Main Board	HM87
Processor	I3-4000M,I5-4200M,I5-4300M,I7-4600M
Memory	4G,8GDDR3
LAN	Gigabit Ethernet
Audio	Stereo Sound Output
USB	2*USB3.0,4*USB3.0
Graphics Card	Integrated Graphics Card
Hard Disk	64G,128G,256G,512G
Color	Orange
Adapter	12V7A
Camera	1.0 MP
Operating System	WIN7/10/11/Linux
Bluetooth	Optional
Resolution	1920*1080
Speaker	High fidelity sound speaker

Technology

The design of the cooling system of the all-in-one computer is crucial. Usually, a fan and heat sink combination is used to ensure effective heat dissipation of heat-generating components such as the CPU and graphics card. The air duct layout should be considered during the design to optimize air flow and avoid heat accumulation. After the cooling system is assembled, the temperature test is carried out to ensure that the temperature remains within a safe range during long-term operation.

Theory

The motherboard of the all-in-one computer is customized to fit into limited space. The principle is to achieve functional integration through high-density layout and miniaturized components (such as SO-DIMM memory and M.2 hard disk). This design minimizes the size of the device while ensuring performance, making it suitable for desktop or wall-mounted use.

Attraction

- 1. Home entertainment center:** All-in-one computers support 4K video playback and high-quality audio to create an immersive home theater experience.
- 2. Remote office tool:** Built-in HD camera and microphone, support video conferencing, suitable for remote office or online education.
- 3. Fast startup:** Equipped with a solid-state drive, the boot and software loading speeds are extremely fast, improving usage efficiency.
- 4. Health management:** Some models are equipped with health monitoring functions, such as sedentary reminders, to help users develop good habits.
- 5. Kids mode:** Built-in children's exclusive mode, providing a safe Internet environment and educational content, suitable for family use.

Detailed Images

All In One PC

Powerful Running Performance
Business Office/ Home Entertainment/ Game Video



HD Resolution



Screen Ratio



Widescreen



Optional Upgrades

CPU



Intel i3 i5 i7 2~10th Gen

MEMORY



DDR3/DDR4
4GB/8GB/16GB/32GB

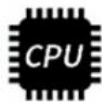
SSD



SSD 128GB/256GB/512GB
HDD 500GB/1TB/2TB

Office and Game All In One Computer

Built in drive with recording, Camera, Microphone



Intel Core (optional)
i7-4790Processor

8G

Fluent Running
High Speed Memory



High Speed
Large Capacity SSD



Built-in Microphone
HDR Camera



Built-in Bluetooth
Wireless Dual Frequency
WIFI



Built-in Drive Can
Play Disk

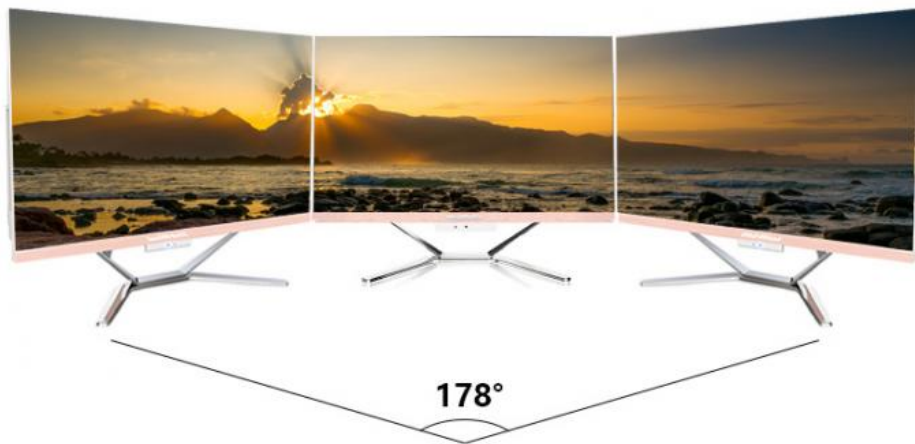


Dimension





178° Ultra-wide viewing angle
HD+ VGA Port can connect to 2 monitors

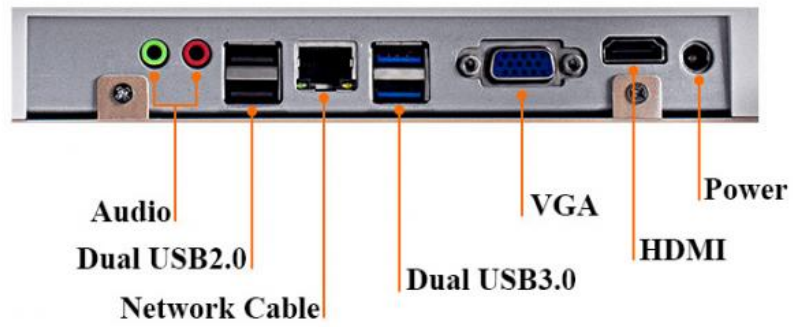


-5°-15°, Adjustable visible view
according to demand

2mm Narrow Frame



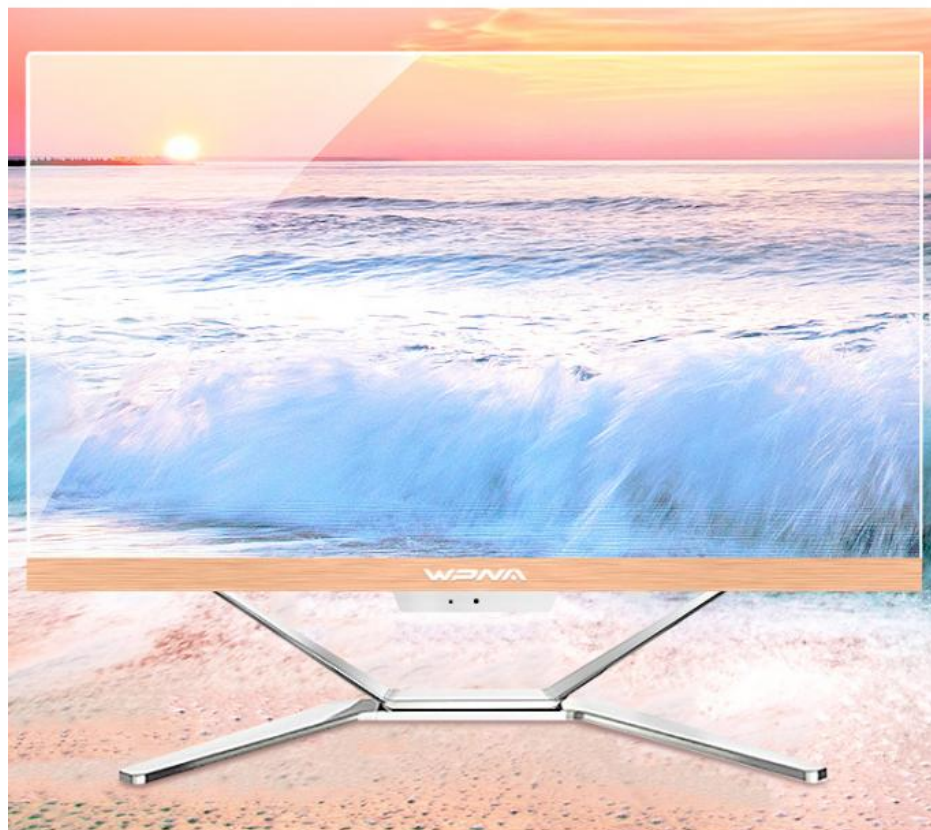
Abundant Ports



HDR Picture Colorful Display

Super narrow frame, 23.6 inch screen, full HDR IPS Screen
with 1920*1080 resolution

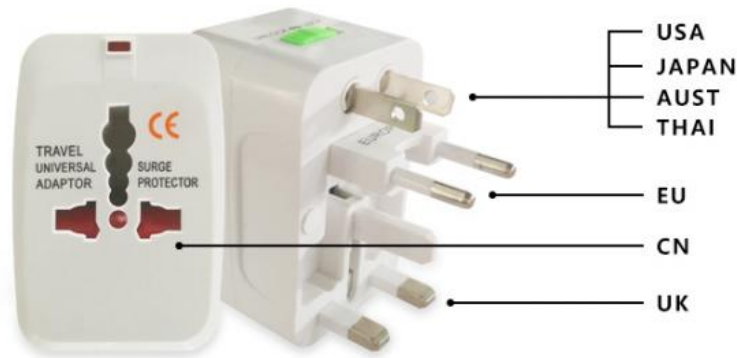
AH-IPS | 1080P | 88% | 3ms



Multifunction Adapter

Get Rid Of Obstacles of Using Power Around The World

Equipped with universal multifunction exchange adapter
to take care of all concerns during work,
business trip and even travel around the world



Application Scenario

Commercial display equipment: All-in-one machines are used for product display and advertising in shopping malls and exhibition halls. Its high brightness and high contrast screen attracts customers' attention and supports long-term operation, making it suitable for commercial places that require continuous display.

Medical information terminal: All-in-one machines are used in hospitals for medical record management and patient information query. Its high hygiene standards and easy-to-clean design are suitable for use in medical environments, helping medical staff to quickly obtain and update patient information and improve medical efficiency.

Catering ordering system: All-in-one machines are used as self-service ordering terminals in restaurants, supporting touch operation and multiple payment methods. Its fast response and user-friendly interface improve the customer ordering experience and are suitable for fast food restaurants and high-traffic restaurants.



Company Information

About Us

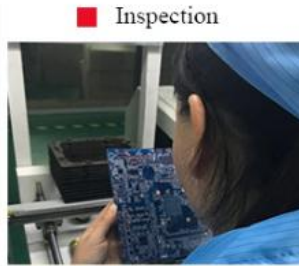


Guangzhou Weipuna Technology Development Co., Ltd. is a factory manufacturer that mainly produces advanced high technology products of R& D, manufacturing and sales of all-in-one computer, mini PC, touch screen monitor, smart teaching& conference panel and laptop computer. It is an integrity of factory and office with an area of over 2,000 square meters. Neat and huge work flow, well-trained and qualified staff enormously secure smooth and efficient production. Compared with traditional computer, our all-in-one computer and mini PC embody in obvious highlights of light weight, compact size, easy to carry, stable and powerful function, low consuming of electricity and radiation, healthy and friendly to environment. Our products have not only been widely applied to business, home leisure, commercial and industrial control use and finance end service, but also exported to many overseas countries, earning excellent reputations from customers. Under joint efforts of our professional R& D technology team, we will commit to manufacturing and providing more high end products to global market in the future

■ Production Process



■ Materials Arrangement



■ Inspection



■ Board Testing



■ Internal Assembly



■ External Assembly



■ Equipment Inspection

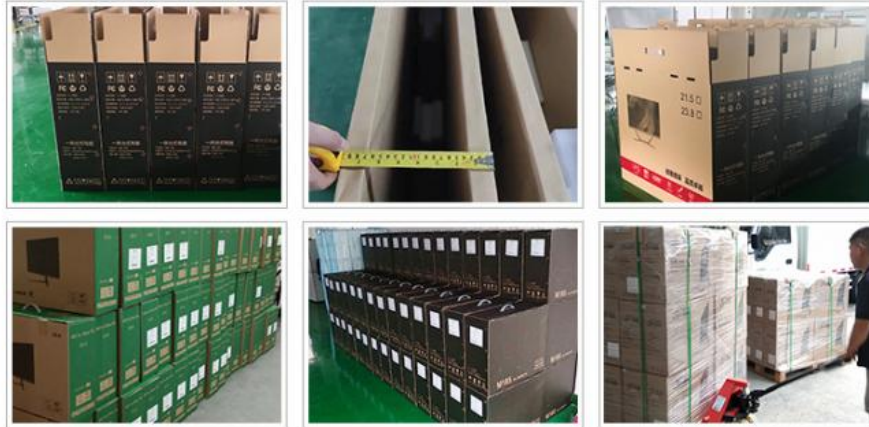


■ Aging



■ Finished Product

Packaging & Shipping



SHIPPING



Certifications

Our Certificates



Our Services

Advantages of dual factories: Guangzhou Computer Factory has two professional production bases, focusing on hardware manufacturing and computer assembly respectively, ensuring independent production of the entire process from parts to finished products, improving efficiency and quality.

Hardware manufacturing: The hardware factory is equipped with advanced equipment to produce high-precision computer cases, brackets and other metal accessories to meet diverse needs and support customized services.

Computer manufacturing: The computer factory focuses on the assembly and testing of desktops, notebooks and servers, and adopts a strict quality control system to ensure stable and reliable product performance.

Integrated service: From design, production to after-sales, it provides one-stop solutions, supports OEM/ODM cooperation, and meets customers' personalized needs.

Efficient delivery: With perfect supply chain management and automated production lines, it ensures rapid response to orders, shortens delivery cycles, and provides customers with efficient services.

FAQ

Q: Is your company a real manufacturer?

A: Our company is a professional manufacturer mainly producing all-in-one computer, mini PC, touch screen monitor, smart teaching& conference flat panel and laptop computer in Panyu District, Guangzhou City. You are mostly welcomed to visit us anytime.

Q: How does your factory do regarding quality control?

A: Quality is priority. We always attach great importance to quality controlling from the very beginning to the end and focus on every detail strictly during a variety of testings.

Q: Can I visit your factory for inspection?

Your visit is always welcomed.

Q: What if I'd like to use my own logo or design?

A: OEM& ODM customization is supported. Clients can enjoy this service and experience once requirements come.

Q: How long is delivery time?

A: The delivery is normally estimated within 2-15 days according to the order capacity

Q: What is your advantage?

A: 1. Direct factory, strong R&D team, customize as your request available.

2. 24 hours after-sale service, ensure solving your problems earliest.



Guangzhou Weipuna Technology Development Co., Ltd.



+86 135 4430 6128



allinonepccomputers.com

4th Floor, Building B7, Huachuang Animation Industrial Park, No. 9, Huateng Road, Shiji Town, Panyu District,
Guangzhou City, Guangdong Province, China