

## Quad Core Window 10 Ultra Slim Gaming Laptop 8GB 256GB NVIDIA GeForce MX250

Our Product Introduction

for more products please visit us on [allinonepccomputers.com](http://allinonepccomputers.com)

### Basic Information

- Place of Origin: Guangdong, China
- Brand Name: Wpna
- Certification: CE, RoHS
- Minimum Order Quantity: 5set
- Price: \$720.00/pieces 1-49 pieces
- Packaging Details: carton, bubble bag, stecth film
- Supply Ability: 10000 Piece/Pieces per Month

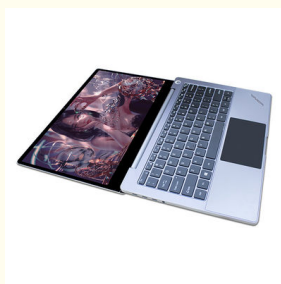


### Product Specification

- Processor Manufacture: Intel
- Memory Capacity: 8GB
- Processor Type: Intel I5
- Graphics Card Type: Dedicated Card
- Screen Size: 14"
- Display Ratio: 16:9
- Display Resolution: 3840\*2160
- Plugs Type: CN
- Hard Drive Type: SSD+HDD
- Video Memory Type: GDDR4
- Operating System: Windows 10
- Processor Main Frequency: 1.60GHz
- Processor Core: Quad Core
- WLAN: WiFi 802.11 Ac
- CPU: Quad Core



### More Images



## Product Description

**Quad Core Latest Window 10 Ultra Slim Gaming Laptop 8GB 256GB NVIDIA GeForce MX250**

## Product Show









specification

# PRODUCT PARAMETER

Model:	Wpna Book Y400
Processor:	Intel Core i5-10210U(10th processor)
Storage:	8GB/ 16GB DDRD4 (4th high frequency)
Graphics Card :	Gaming MX 250 2GB Discret Graphics Card
Craft :	CNC Made
Touch Panel:	Full Coverage Glass Touch Panel
Resolution:	4K IPS Solid Screen(3840*2160)
Camera:	720P 1million HDR Camera
Screen :	Support 180° metal rotation angle/ 180° screen rotation
Unlock :	Password/Fingerprint(Support 10 Points)
Internet Connection:	50HGz+2.40GHz Double Frequency WIFI/ Bluetooth 5.0
Battery :	51467 mAh
Power :	65W Adapter
System :	Windows 10 Family Version
Port:	3xType-C, 3.5mm Earphone, 2*3.0 USB, SD Card Reader
Speaker :	Double Stereo Sound Speaker
Specification:	H 1.65cm*W21.85cm*L32.37cm, 1.45KG

Detailed Images







## Abundant Ports for Expansion

3 Type-C, 2 support 4k video output, all of them support  
super charge and data transmission, earphone,  
double 3.0USB and mini card reader)



180°single hand open and lock





- ▶ support 180° metal rotation ankle

- ▶ full fit screen

- ▶ Fn+F11 180° screen rotation.

180°



## Fn+F11 Business 180° Rotation



Press Fn+F11 to shift screen, 180° rotation to share information without moving your computer

# CNC Craft

light and slim body, easy to carry

Application of CNC craft, flawless metal appearance design 1.45kg weight, 13mm thickness 6.09mm super narrow screen frame



4K Ultra HDR rate 3480\*2060

IPS Screen



14 inch



IPS full screen



100% RGB Coverage



6.09mm super narrow frame



## Tenth Intelligent Intel Core

i5 High Performance Processor

Main Frequency: 1.60GHz, Core Frequency: 4.20GHz  
6MB High Speed Cache



Quad Core

**10<sup>th</sup>**

10th Intel



Core Frequency:  
4.20GHz







## New Generation GeForce MX 250 Discrete Graphics Card



Memory Frequency Rate

**MX250 2G**  **1752MHz**

MX150 2G  **1502MHz**

MX130 2G  **1469MHz**

Support 16G double aisle accelerating  
RAM to increase 85% running speed  
compared with 8G aisle RAM



6 seconds to boot up, high  
efficient transmission



MD



4K IPS Ultra HDR Solid Screen

4K Ultra HDR

high bright screen display, 3840\*2160

Ultra HDR Rate W:H 16:9





# Glass Touch Panel

full coverage of automization damping, AF anti-fingerprint  
crystals glass touch panel, high class flat panel touch



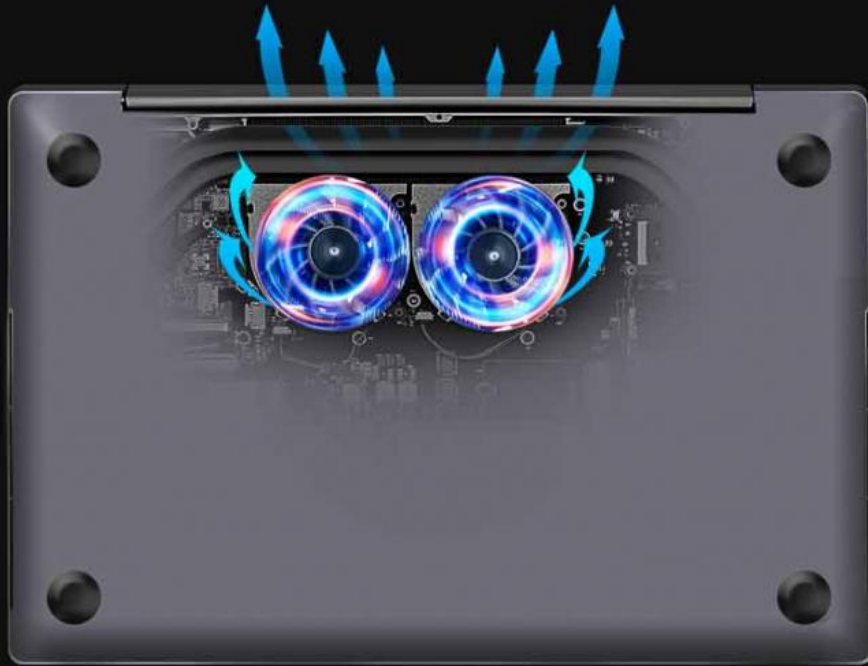
Touch with slot



Flat glass touch panel design

## Strong Copper Tube& Double Efficient Fan

fluent heat dissipation function, swift down  
of temperature and noise



## Backlight Keyboard Brings Brightness to the Darkness



full size adjustable  
backlight keyboard



fingerprint unlock  
within 0.5S recognition



double stereo  
3D sorround sound





51476 Mah Super  
Endurance  
Battery

Over 8 Hours  
Running time



25 days lasting endurance under stand by status

**Double Frequency 5G**

**WiFi/Bluetooth**

## WIFI/BLEETOOTH

equipped with 5GHz/ 2.40GHz double frequency WIFI,  
as well as 5.0 bluetooth, enjoy wireless internet anytime





# Application Senario

1

OFFICE



2

HOTEL



3

SCHOOL



4

House-hlod



## Hot Sales



### Company Information

## COMPANY PROFILE

Guangzhou Weipuna Technology Development Co., Ltd. is a factory manufacturer that mainly produces advanced high technology products of R& D, manufacturing and sales of all-in-one computer, mini PC, touch screen monitor, smart teaching& conference panel and laptop computer. It is an integrity of factory and office with an area of over 2,000 square meters. Neat and huge work flow, well-trained and qualified staff enormously secure smooth and efficient production. Compared with traditional computer, our all-in-one computer and mini PC embody in obvious highlights of light weight, compact size, easy to carry, stable and powerful function, low consuming of electricity and radiation, healthy and friendly to environment. Our products have not only been wildly applied to business, home leisure, commercial and industrial control use and finance end service, but also exported to many overseas countries, earning excellent reputations from customers. Under joint efforts of our professional R& D technology team, we will commit to manufacturing and providing more high end products to global market in the future



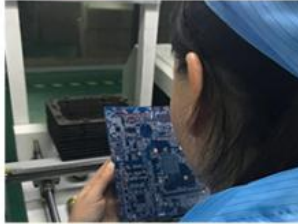


## Production Process



Materials Arrangement

Inspection



Board Testing



Internal Assembly



External Assembly



Equipment Inspection



Aging



Finished Product

## Certifications

### OUR CERTIFICATES



## Packaging & Shipping



**PACKAGING AND SHIPPING** **WPNA®**



**SHIPPING**



[Click Here Back to Home](#)

## Our Services

### Our Services:

1. Improving the quality of product according to your feedbacks
2. Arranging your orders as soon as possible.
3. Giving professional answers to your questions timely. (Including pre-sale and after-sale)

## FAQ

### Q: Is your company a real manufacturer?

**A: Our company is a professional manufacturer mainly producing all-in-one computer, mini PC, touch screen monitor, smart teaching& conference flat panel and laptop computer in Panyu District, Guangzhou City. You are mostly welcomed to visit us anytime.**

### Q: How does your factory do regarding quality control?

**A: Quality is priority. We always attach great importance to quality controlling from the very beginning to the end and focus on every detail strictly during a variety of testings.**

### Q: Can I visit your factory for inspection?

**Your visit is always welcomed.**

### Q: What if I'd like to use my own logo or design?

**A: OEM& ODM customization is supported. Clients can enjoy this service and experience once requirements come.**

### Q: How long is delivery time?

**A: The delivery is normally estimated within 2-15 days according to the order capacity**

### Q: What is your advantage?

**A: 1. Direct factory, strong R&D team, customize as your request available.**

**Q: 2. 24 hours after-sale service, ensure solving your problems earliest.**

**[Click here for More Information](#)**



**Guangzhou Weipuna Technology Development Co., Ltd.**



+86 135 4430 6128



[allinonepccomputers.com](http://allinonepccomputers.com)

4th Floor, Building B7, Huachuang Animation Industrial Park, No. 9, Huateng Road, Shiji Town, Panyu District,  
Guangzhou City, Guangdong Province, China