

## 14 Inch Slim Lightweight Laptop , Ultra Slim Notebook With 2gb Video Memory

Our Product Introduction

### Basic Information

- Place of Origin: Guangdong, China
- Brand Name: Wpna
- Certification: CE, RoHS
- Minimum Order Quantity: 5set
- Price: \$720.00/pieces 1-49 pieces
- Packaging Details: carton, bubble bag, stecth film
- Supply Ability: 10000 Piece/Pieces per Month

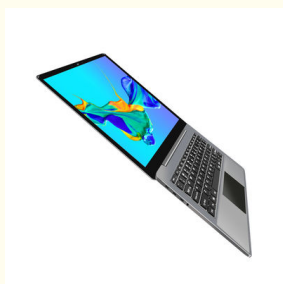


### Product Specification

- Processor Manufacture: Intel
- Memory Capacity: 8GB
- Processor Type: Intel I5
- Graphics Card Type: Dedicated Card
- Screen Size: 14"
- Display Ratio: 16:9
- Display Resolution: 3840\*2160
- Plugs Type: CN
- Hard Drive Type: SSD+HDD
- Video Memory Type: GDDR4
- Operating System: Windows 10
- Processor Main Frequency: 1.60GHz
- Processor Core: Quad Core
- WLAN: WiFi 802.11 Ac
- CPU: Quad Core



### More Images



for more products please visit us on [allinonepccomputers.com](http://allinonepccomputers.com)

## Wholesale Intel I5 14 inch SSD HDD Ultra Thin Laptops Notebook Computer PC gaming laptop i7

### Product Show









specification

## PRODUCT PARAMETER

<b>Model:</b>	Wpna Book Y400
<b>Processor:</b>	Intel Core i5-10210U(10th processor)
<b>Storage:</b>	8GB/ 16GB DDRD4 (4th high frequency)
<b>Graphics Card :</b>	Gaming MX 250 2GB Discret Graphics Card
<b>Craft :</b>	CNC Made
<b>Touch Panel:</b>	Full Coverage Glass Touch Panel
<b>Resolution:</b>	4K IPS Solid Screen(3840*2160)
<b>Camera:</b>	720P 1million HDR Camera
<b>Screen :</b>	Support 180° metal rotation angle/ 180° screen rotation
<b>Unlock :</b>	Password/Fingerprint(Support 10 Points)
<b>Internet Connection:</b>	50HGz+2.40GHz Double Frequency WIFI/ Bluetooth 5.0
<b>Battery :</b>	51467 mAh
<b>Power :</b>	65W Adapter
<b>System :</b>	Windows 10 Family Version
<b>Port:</b>	3xType-C, 3.5mm Earphone, 2*3.0 USB, SD Card Reader
<b>Speaker :</b>	Double Stereo Sound Speaker
<b>Specification:</b>	H 1.65cm*W21.85cm*L32.37cm, 1.45KG

# Optional Configurations

4K HDR Screen

---

Core i5-10210U / 16G / SSD512G / Graphics card MX250

---

Core i5-10210U / 8G / SSD128G / Graphics card MX250

---

Core i5-10210U / 8G / SSD512G / Graphics card MX250

---

Core i5-10210U / 8G / SSD256G / Graphics card MX250

---

Core i5-10210U / 16G / SSD256G / Graphics card MX250

---

Core i7-10610U / 16G / SSD256G / Graphics card MX250

---

Core i7-10610U / 8G / SSD128G / Graphics card MX250

---

Core i7-10610U / 8G / SSD512G / Graphics card MX250

---

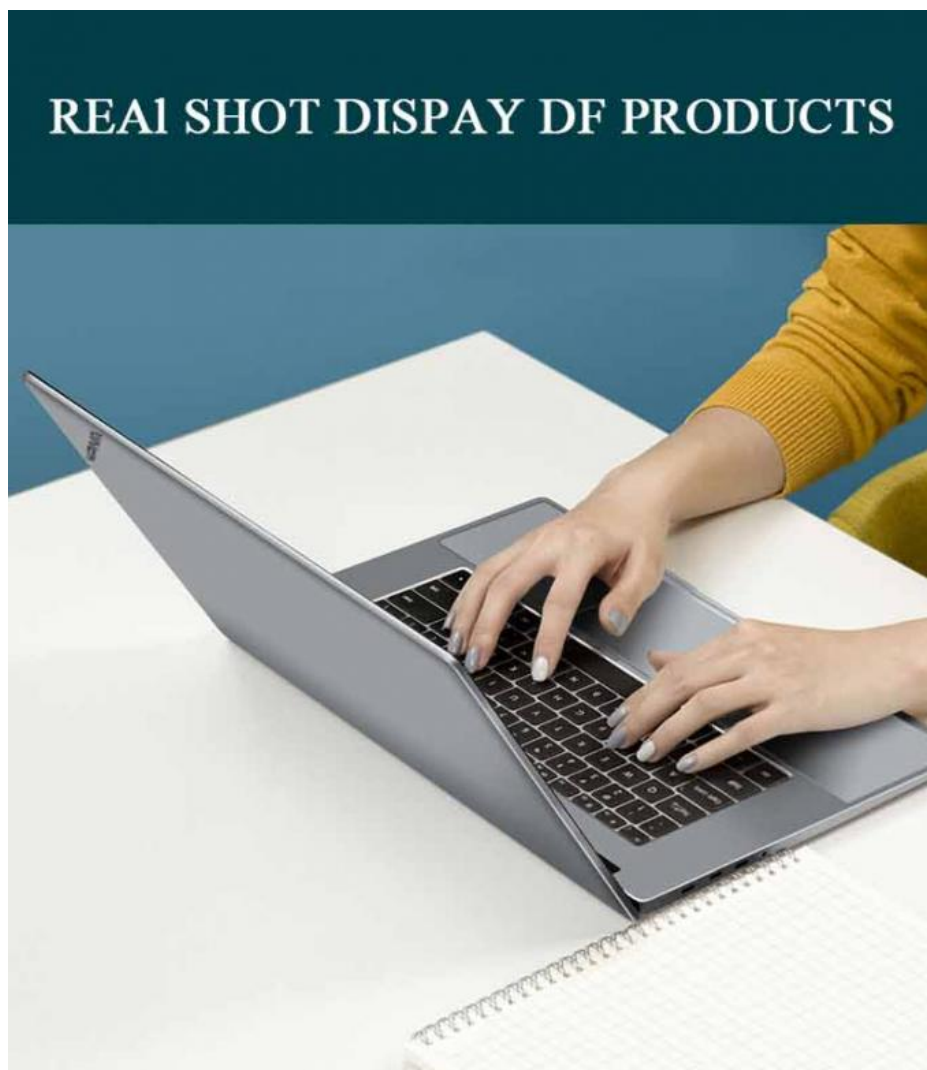
Core i7-10610U / 16G / SSD512G / Graphics card MX250

---

Core i7-10610U / 8G / SSD256G / Graphics card MX250

---

Detailed Images







## Abundant Ports for Expansion

3 Type-C, 2 support 4k video output, all of them support  
super charge and data transmission, earphone,  
double 3.0USB and mini card reader)







3\*Type-C

AUDIO

SD

3.0\*2USB

180°single hand open and lock

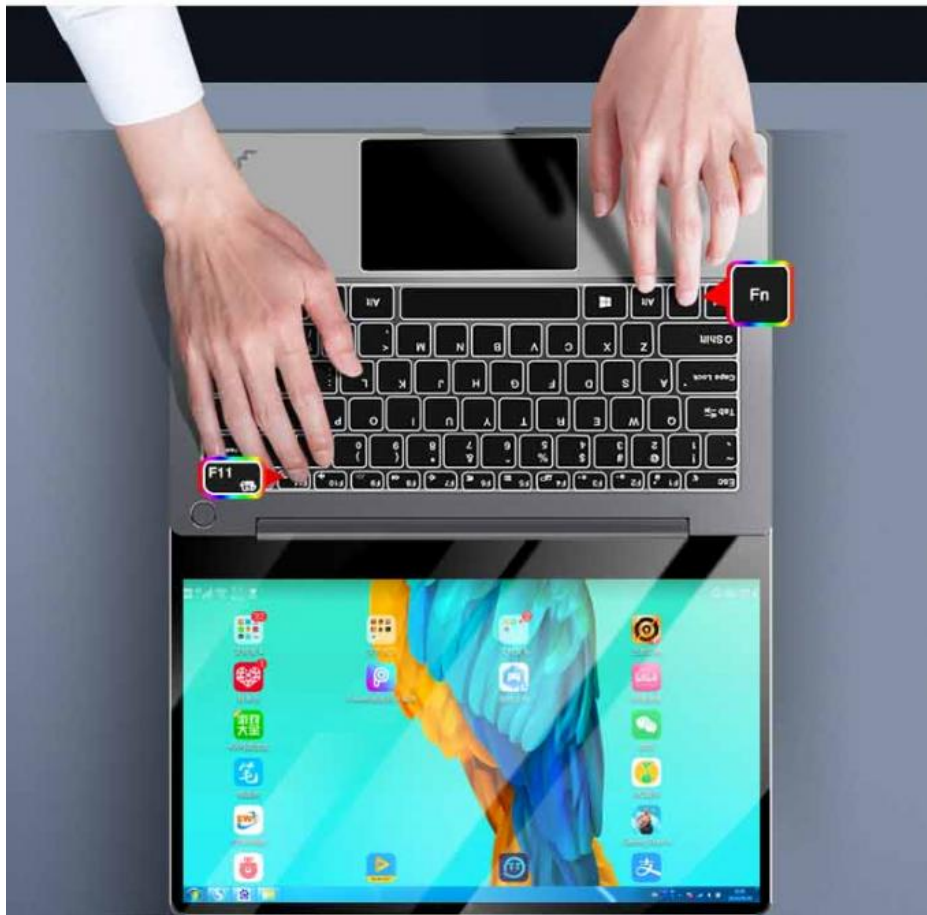
▶ support 180° metal rotation ankle

▶ full fit screen

▶ Fn+F11 180° screen rotation.

180°





## Fn+F11 Business 180° Rotation



Press Fn+F11 to shift screen, 180° rotation to share information without moving your computer

## CNC Craft

light and slim body, easy to carry

Application of CNC craft, flwaless metal appearance design1.45kg weight, 13mm thickness 6.09mm super narrow screen frame



4K Ultra HDR rate 3480\*2060

IPS Screen



14 inch



IPS full  
screen



100% RGB  
Coverage



6.09mm super  
narrow frame





# Tenth Intelligent Intel Core

i5 High Performance Processor

Main Frequency: 1.60GHz, Core Frequency: 4.20GHz

6MB High Speed Cache



Quad Core

**10<sup>th</sup>**

10th Intel



Core Frequency:

4.20GHz





# New Generation GeForce MX 250

## Discrete Graphics Card



Memory Frequency Rate

**MX250 2G**  1752MHz

MX150 2G  1502MHz

MX130 2G  1469MHz

Support 16G double aisle accelerating  
RAM to increase 85% running speed  
compared with 8G aisle RAM

8G Aisle 

16Gdouble Aisle 



6 seconds to boot up, high  
efficient transmission

SSD ——— SSD raise up 4.3 time ND ↑  
MD ———







## 4K IPS Ultra HDR Solid Screen

4K Ultra HDR

high bright screen display, 3840\*2160

Ultra HDR Rate W:H 16:9



## Glass Touch Panel

full coverage of automation damping, AF anti-fingerprint  
crystals glass touch panel, high class flat panel touch





Touch with slot



Flat glass touch panel design

## Strong Copper Tube& Double Efficient Fan

fluent heat dissipation function, swift down  
of temperature and noise



## Backlight Keyboard Brings Brightness to the Darkness



full size adjustable  
backlight keyboard



fingerprint unlock  
within 0.5S recognition



double stereo  
3D surround sound





51476 Mah Super  
Endurance  
Battery

Over 8 Hours  
Running time



25 days lasting endurance under stand by status

## Double Frequency 5G WIFI/Bluetooth

equipped with 5GHz/ 2.40GHz double frequency WIFI,  
as well as 5.0 bluetooth, enjoy wireless internet anytime





[Click Here For More](#)

Hot Sales



A2224



W27



K24



L24



M27



S240

Company Information

## COMPANY PROFILE

Guangzhou Weipuna Technology Development Co., Ltd. is a factory manufacturer that mainly produces advanced high technology products of R& D, manufacturing and sales of all-in-one computer, mini PC, touch screen monitor, smart teaching& conference panel and laptop computer. It is an integrity of factory and office with an area of over 2,000 square meters. Neat and huge work flow, well-trained and qualified staff enormously secure smooth and efficient production. Compared with traditional computer, our all-in-one computer and mini PC embody in obvious highlights of light weight, compact size, easy to carry, stable and powerful function, low consuming of electricity and radiation, healthy and friendly to environment. Our products have not only been wildly applied to business, home leisure, commercial and industrial control use and finance end service, but also exported to many overseas countries, earning excellent reputations from customers. Under joint efforts of our professional R& D technology team, we will commit to manufacturing and providing more high end products to global market in the future



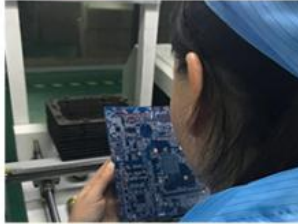


## Production Process



Materials Arrangement

Inspection



Board Testing



Internal Assembly



External Assembly



Equipment Inspection



Aging



Finished Product

## Certifications

### OUR CERTIFICATES



## Packaging & Shipping



**PACKAGING AND SHIPPING** **WPNA®**



**SHIPPING**



[Click Here Back to Home](#)

## Our Services

### Our Services:

1. Improving the quality of product according to your feedbacks
2. Arranging your orders as soon as possible.
3. Giving professional answers to your questions timely. (Including pre-sale and after-sale)

## FAQ

### Q: Is your company a real manufacturer?

**A: Our company is a professional manufacturer mainly producing all-in-one computer, mini PC, touch screen monitor, smart teaching& conference flat panel and laptop computer in Panyu District, Guangzhou City. You are mostly welcomed to visit us anytime.**

### Q: How does your factory do regarding quality control?

**A: Quality is priority. We always attach great importance to quality controlling from the very beginning to the end and focus on every detail strictly during a variety of testings.**

### Q: Can I visit your factory for inspection?

**Your visit is always welcomed.**

### Q: What if I'd like to use my own logo or design?

**A: OEM& ODM customization is supported. Clients can enjoy this service and experience once requirements come.**

### Q: How long is delivery time?

**A: The delivery is normally estimated within 2-15 days according to the order capacity**

### Q: What is your advantage?

**A: 1. Direct factory, strong R&D team, customize as your request available.**

**Q: 2. 24 hours after-sale service, ensure solving your problems earliest.**

**[Click here for More Information](#)**



**Guangzhou Weipuna Technology Development Co., Ltd.**



+86 135 4430 6128



[allinonepccomputers.com](mailto:allinonepccomputers.com)

4th Floor, Building B7, Huachuang Animation Industrial Park, No. 9, Huateng Road, Shiji Town, Panyu District,  
Guangzhou City, Guangdong Province, China