

After-sales Service 23.8 inch Core i5 i7 Gamer All-in-One PC Gaming Desktop Computer

Our Product Introduction

for more products please visit us on allinonepccomputers.com

Basic Information

- Place of Origin: Guangdong, China
- Brand Name: WPNA
- Certification: CE/FCC/RoHs/ISO9001/CCC
- Model Number: F24
- Minimum Order Quantity: 20 units
- Price: Negotiable
- Packaging Details: carton, bubble bag, stretch film
- Delivery Time: 15-30 WORKDAYS
- Payment Terms: L/C, D/A, D/P, T/T, Western Union, MoneyGram
- Supply Ability: 10000 Piece/Pieces per Month



Product Specification

- Processor Brand: Intel/AMD
- SSD/HDD: 32GB/64GB/128GB/256GB/512GB/1TB/2TB Optional
- RAM: 4GB/8GB/16GB/32GB Optional
- Operating System: Windows 10/11/Ubuntu/Linux
- Series: For Gaming
- Display Resolution: 1080*1920
- Plugs Type: US, JP, CN, AU, UK, EU
- Screen: 1920*1080
- WIFI: Wireless 802.11ac
- OS: Compatible With Win7/8/10/11 Linux
- After-sales Service: Call Center And On-line Technical Support, Onsite Training And Inspection, Others
- Warranty(Year): 1-Year
- Highlight: core i5 all in one desktop pc, core i5 all in one pc computer,



More Images



Product Description

Manufacturer 23.8 core i5 i7 gamer all in one pc computer gaming desktop computer

Basic Description

Our high-performance all-in-one computers are designed for modern office and home use, integrating the latest processor technology and high-definition display to ensure a smooth user experience and clear visual enjoyment. Its simple all-in-one design not only saves space, but also comes with a rich interface for easy connection to various devices. The perfect combination of elegant appearance and powerful functions, providing convenient installation and maintenance, is an ideal choice for users who pursue efficiency and beauty.

Product Show



Front



Side



Back



Specification

Model	F24
Size	23.8inch
Main Board	H310-P
Processor	i3,i5,i7 7th generation U
Memory	8G,16G,32G
LAN	Gigabit Ethernet
Audio	Stereo Sound Output
USB	2*USB3.0/4*USB2.0
Graphics Card	GeForce GTX1650 4G RX 580 8G
Hard Disk	128G/256G/512G
Color	Black
Adapter	19V 13.15A

Camera	1.0 MP
Operating System	WIN 10
-Bluetooth-	Optional
Resolution	1920*1080
Speaker	High fidelity sound speaker

Selling points

Easy installation and maintenance: The user-friendly design makes installation and setup simple and quick, lowers the threshold for use, and improves work efficiency.

Efficient performance: Equipped with the latest generation of processors, it provides excellent computing power, quickly handles multi-tasking operations, and meets professional needs.

Space-saving design: The integrated compact body reduces desktop clutter and is suitable for office environments and home use with limited space.

Rich interface configuration: A variety of expansion ports support convenient connection of peripherals, including USB-C, HDMI, etc., to meet diverse work and entertainment needs.

High-definition display technology: Equipped with a wide viewing angle and high-resolution display, it brings clear and sharp visual effects, protects eyesight and improves user experience.

Technology

Processor: Equipped with a high-performance CPU, it provides powerful computing power and ensures smooth multitasking performance.

Display technology: It adopts a 23.8-inch to 27-inch full HD display with IPS technology to ensure accurate colors and wide viewing angles.

Memory and storage: It provides options from 8GB to 32GB DDR4 RAM, as well as high-speed SSD storage with a capacity of up to 2TB for fast startup and data access.

Connectivity: Built-in Wi-Fi 6 and Bluetooth 5.0 support faster wireless connections; multiple interfaces are configured at the same time.

Operating system: Pre-installed with Windows 11 operating system, it brings users a safer and more efficient use experience and supports various productivity tools.

Characteristics

Our all-in-one computers integrate an advanced cooling system to ensure long-term efficient operation without frequency reduction. The display supports eye protection mode to effectively reduce blue light damage and protect users' eyesight. The modular design allows users to upgrade memory and storage devices as needed to extend the life of the computer. Built-in high-quality speakers provide a clear and natural sound experience. In terms of network connection, in addition to supporting Wi-Fi 6 and Bluetooth 5.0, it is also equipped with a 2.5GbE wired network port to meet the needs of high-speed and stable networking. The pre-installed customized software suite helps users manage tasks and optimize system performance more efficiently.

Application Scenario



Company Information

About Us



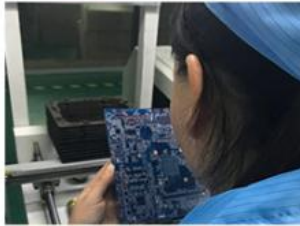
Guangzhou Weipuna Technology Development Co., Ltd. is a factory manufacturer that mainly produces advanced high technology products of R& D, manufacturing and sales of all-in-one computer, mini PC, touch screen monitor, smart teaching& conference panel and laptop computer. It is an integrity of factory and office with an area of over 2,000 square meters. Neat and huge work flow, well-trained and qualified staff enormously secure smooth and efficient production. Compared with traditional computer, our all-in-one computer and mini PC embody in obvious highlights of light weight, compact size, easy to carry, stable and powerful function, low consuming of electricity and radiation, healthy and friendly to environment. Our products have not only been widely applied to business, home leisure, commercial and industrial control use and finance end service, but also exported to many overseas countries, earning excellent reputations from customers. Under joint efforts of our professional R& D technology team, we will commit to manufacturing and providing more high end products to global market in the future

Production Process



■ Materials Arrangement

■ Inspection



■ Board Testing



■ Internal Assembly

WPNA®



■ External Assembly



■ Equipment Inspection



■ Aging



■ Finished Product

Packaging & Shipping



SHIPPING



Certifications

OUR CERTIFICATES



Our Services

1. Improving the quality of product according to your feedbacks
2. Arranging your orders as soon as possible.
3. Giving professional answers to your questions timely. (Including pre-sale and after-sale)

FAQ

Q: Is your company a real manufacturer?

A: Our company is a professional manufacturer mainly producing all-in-one computer, mini PC, touch screen monitor, smart teaching& conference flat panel and laptop computer in Panyu District, Guangzhou City. You are mostly welcomed to visit us anytime.

Q: How does your factory do regarding quality control?

A: Quality is priority. We always attach great importance to quality controlling from the very beginning to the end and focus on every detail strictly during a variety of testings.

Q: Can I visit your factory for inspection?

Your visit is always welcomed.

Q: What if I'd like to use my own logo or design?

A: OEM& ODM customization is supported. Clients can enjoy this service and experience once requirements come.

Q: How long is delivery time?

A: The delivery is normally estimated within 2-15 days according to the order capacity

Q: What is your advantage?

A: 1. Direct factory, strong R&D team, customize as your request available.

Q: 2. 24 hours after-sale service, ensure solving your problems earliest.



Guangzhou Weipuna Technology Development Co., Ltd.



+86 135 4430 6128



allinonepccomputers.com

4th Floor, Building B7, Huachuang Animation Industrial Park, No. 9, Huateng Road, Shiji Town, Panyu District,
Guangzhou City, Guangdong Province, China