

Intel Core I3 I5 I7 Gaming Desktop All In One PC Computer With Dedicated Graphics Card

Our Product Introduction

for more products please visit us on allinonepccomputers.com

Basic Information

- Place of Origin: Guangdong, China
- Brand Name: WPNA
- Certification: CE/FCC/RoHs/ISO9001/CCC
- Model Number: L22/24
- Minimum Order Quantity: 15 units
- Price: Negotiable
- Packaging Details: carton, bubble bag, stretch film
- Delivery Time: 15-30 WORKDAYS
- Payment Terms: L/C, D/A, D/P, T/T, Western Union, MoneyGram
- Supply Ability: 10000 Piece/Pieces per Month



Product Specification

- Product Name: All-in-One PC
- Series: For Gaming
- CPU: Core I3/i5/i7
- RAM: 4GB/8GB/16GB/32GB Optional
- HDD/SSD: 128GB/286GB/512GB/1TB/2TB
- Operating System: Windows 10/11/Ubuntu/Linux
- Plugs Type: US, JP, CN, AU, UK, EU
- Warranty(Year): 1-Year
- After-sales Service: Call Center And On-line Technical Support, Onsite Training And Inspection, Others
- Highlight: win 10 all in one desktop with graphics card, oem all in one pc computer core i3, i7 win 10 aio pc with graphics card



More Images



Product Description

Core i3 all in one desktop computer i5 i7 win 10 gaming desktops pc

Selling Points

Fully laminated touch screen - using OGS technology, more precise touch, 30% higher light transmittance
Military-grade durability - passed MIL-STD-810G impact resistance certification, adaptable to various environments
All-round optical drive support - compatible with CD/DVD/Blu-ray, with dust-proof and shock-proof design
Intelligent cooling system - three copper tubes + liquid metal heat conduction, keep low temperature and quiet
Modular design - support later hardware upgrades, extend service life
Professional color display - 100% sRGB color gamut, Delta E<1.5
Ergonomic bracket - support lifting and rotation, free adjustment at multiple angles
Rich interface configuration - equipped with Thunderbolt 3+HDMI 2.1+USB4.0
Intelligent light adjustment - automatically adjust brightness and color temperature according to ambient light
Minimalist wireless design - support Wi-Fi 6E and Bluetooth 5.2, say goodbye to wire constraints

Technology

This all-in-one machine adopts fully automated precision assembly technology, and the aviation-grade aluminum alloy one-piece frame ensures structural strength. The touch screen is subjected to nano-level optical coating and vacuum bonding technology to achieve precise touch. The DVD drive adopts a suspended shockproof structure. The whole machine has passed 72 hours of continuous aging test and 200 quality control tests, and is assembled in a 100,000-level dust-free workshop to ensure that the product reliability and durability meet industrial standards.

Theory

The all-in-one machine uses an intelligent touch chipset to achieve millisecond-level response and eliminates false touches through a multi-layer signal filtering algorithm; the DVD module integrates buffering and anti-vibration technology to ensure high-speed disk reading stability; the whole machine uses a dynamic power consumption management system to intelligently adjust performance and heat dissipation according to the usage scenario to achieve efficient and silent operation; the modular architecture supports hot-swap upgrades of various components to extend the product life cycle.

Service

1. Metal and electronic double factory linkage:

Cost advantage: self-production of core components, quality assurance and cost reduction at the same time
Rapid delivery: rapid sampling of metal structural parts, 72 hours to assemble the whole machine.

2. Meet industry customization and provide OEM/ODM services

It only takes 15 days from drawings to actual product production, supporting all kinds of computer customization: server/edge computing equipment/OEM whole machine customization/ODM OEM production, providing customers with one-step carton customization.

Phase 1: Customers make requirements, and the factory customizes the appearance of the chassis

Phase 2: The computer factory makes compatibility adjustments such as software

Phase 3: Synchronous production, high delivery efficiency.

3. No need to worry about after-sales issues:

Efficient, professional, and quick response: Equipped with a professional after-sales team, we can quickly respond to customer needs and provide efficient solutions after you consult from us.

Accurate solutions and technical guarantees: We provide accurate technical support and maintenance services for different problems until the problems are completely solved.

All-round services, considerate and thoughtful: We provide all-round services such as product consultation, usage guidance, and troubleshooting when you need it.

Customer first, win-win cooperation: With customer satisfaction as the purpose, we continuously improve service quality and establish long-term and stable cooperative relationships with customers.

Product Show





Front



Side



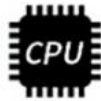
Model	L22/24
Size	21.5/23.8inch
Processor	I3/I5/I7
Memory	4G,8G/16G/32G
LAN	Gigabit Ethernet
Audio	Stereo Sound Output
USB	2*USB3.0,4*USB3.0
Graphics Card	Integrated Graphics Card
Hard Disk	64G,128G,256G,512G, 1TB,2TB
Adapter	12V7A
Camera	1.0 MP
Operating System	WIN7,WIN10/11
-Bluetooth-	Optional
Resolution	1920*1080
Speaker	High fidelity sound speaker

Detailed Images

Office and Game All In One Computer

Built in drive with recording, Camera, Microphone





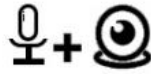
Intel Core (optional)
i7-4790Processor

8G

Fluent Running
High Speed Memory



High Speed
Large Capacity SSD



Built-in Microphone
HDR Camera



Built-in Bluetooth
Wireless Dual Frequency
WIFI



Built-in Drive Can
Play Disk

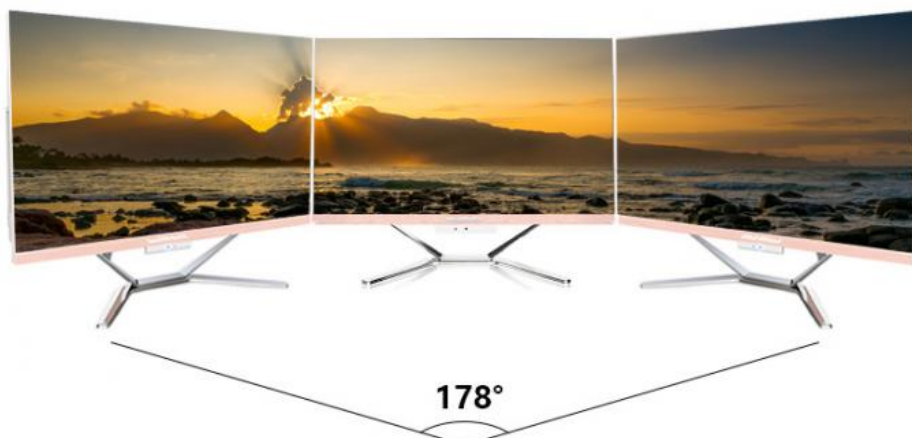


Dimension



178° Ultra-wide viewing angle

HD+ VGA Port can connect to 2 monitors

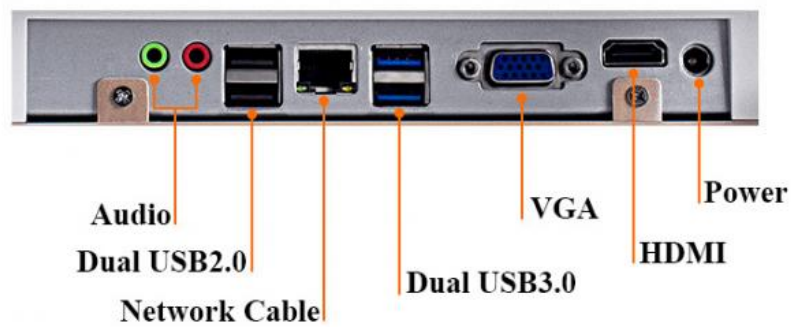


**-5°-15°, Adjustable visible view
according to demand**

2mm Narrow Frame



Abundant Ports

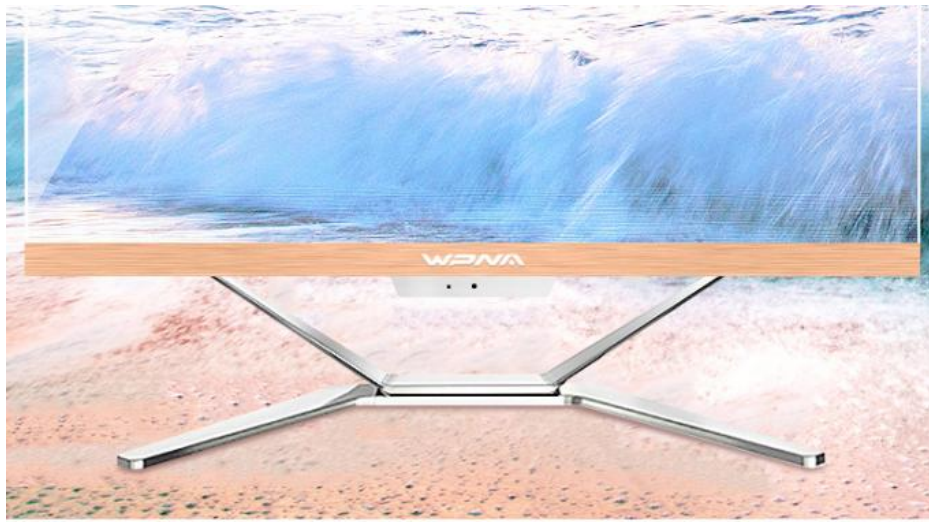


HDR Picture Colorful Display

Super narrow frame, 23.6 inch screen, full HDR IPS Screen
with 1920*1080 resolution

AH-IPS | 1080P | 88% | 3ms





Teleconference Easy To Control

Built-in Camera with Microphone

Online class,distance is no more a problem



High Speed Recording 24X Swift Reading

Application of imported chip, quick
recording speed, disk play, install
drive for office printing and teaching disk



Usage of Built-in DVD Drive



Video of English
Teacher



Film Disk
Recording



Flawless Music
Recording



Software
Installation



Large Capacity of
Game Installation



Documents Recording
Installation



Teaching Disk
Recording

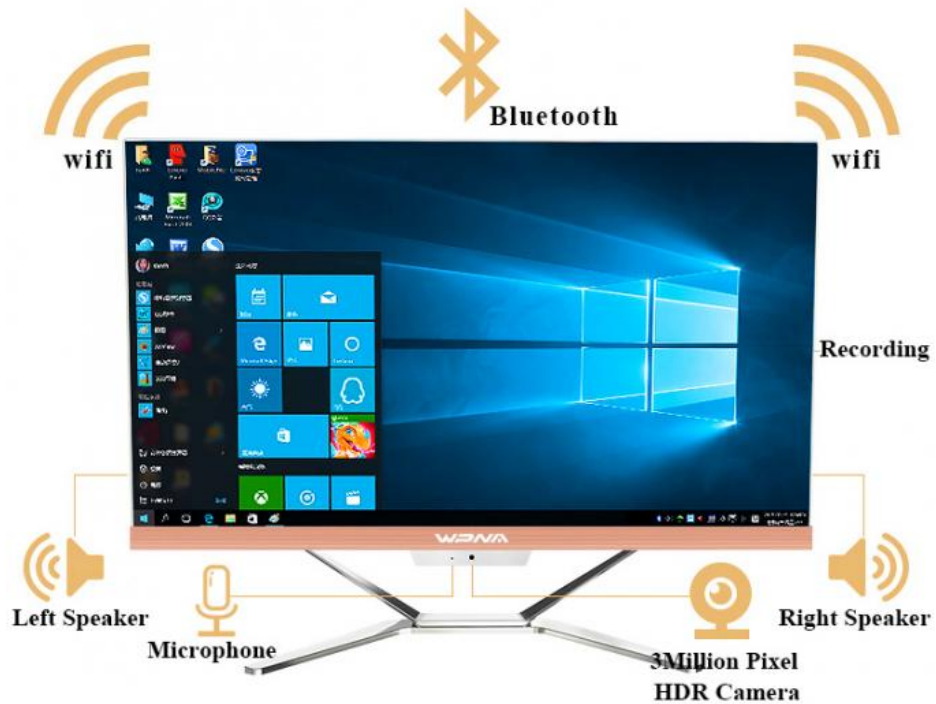


System Installation
Recording

Video Conference Voice Talk

Multifunction All In One Computer

Built-in 3million pixel HDR camera, support video call and teleconference



Core i7, Release Your Strength

Intel Core i7-4790 Quad Core Processor

Intel Haswell instruction set, 4th generation core i7-4790 processor,
quad core eight thread. Main
frequency 3.6GHz, single core frequency 4.00GHz, 8MB cache

4.00GHz single core frequency

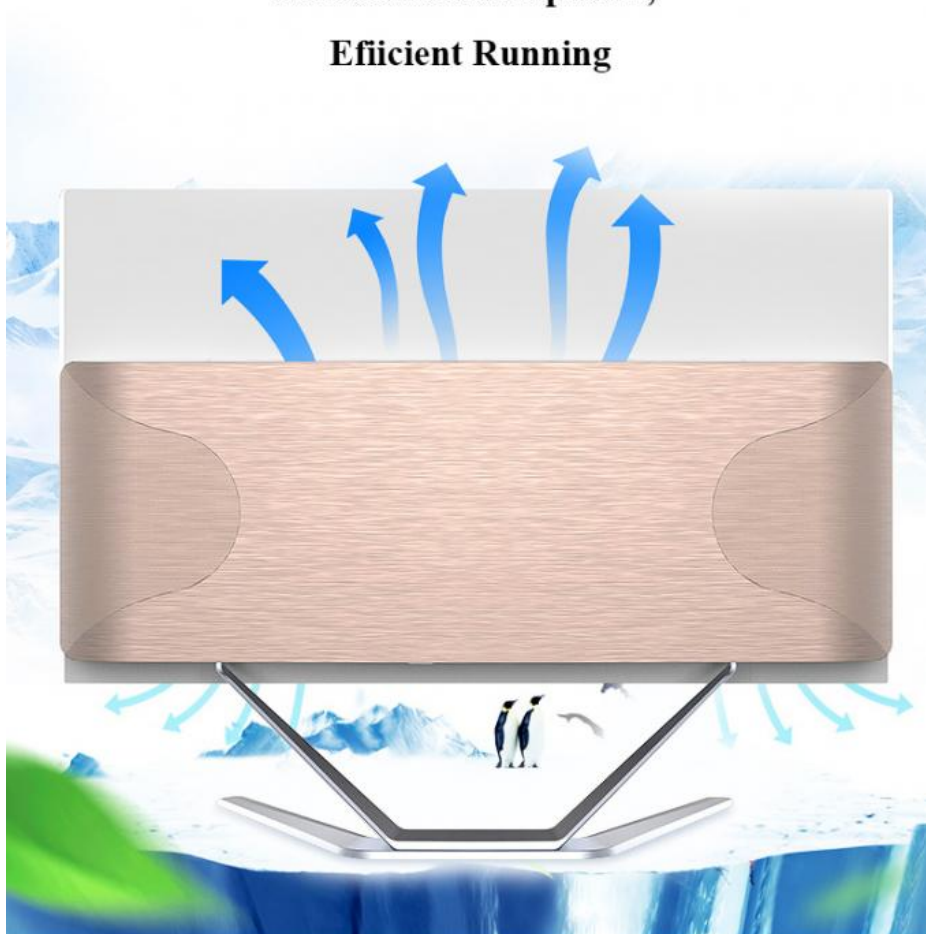
quad core eight thread

core graphics 4600





**Stable Heat Dissipation,
Efficient Running**



**Swift Lowing
Temperature**



**Silence and
Lowing Noise**



Low Consuming



Rapid Running



**Elegant Brushed Texture Body
Champaigne Color Luxury Exquisite**



Application Scenario

Business elite workstation - touch-screen annotation of documents/video conferencing is more efficient, DVD reads business data

Home audio-visual entertainment cabin - large-screen touch screen for more fun, built-in optical drive plays collection DVDs

Creative designer drawing board - pressure-sensitive touch screen for precise painting, wide color gamut for professional colors

Online learning helper - touch screen interactive answering is more intuitive, optical drive reads educational CDs

Data backup expert - DVD burns important data, supports encrypted CD storage

Multi-scene deformation expert - can browse documents in portrait mode/watch movies in landscape mode, bracket rotates 360° freely



Company Information

About Us

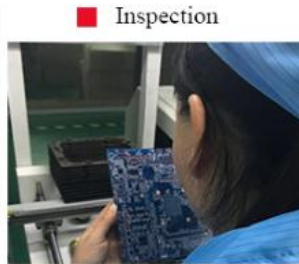


Guangzhou Weipuna Technology Development Co., Ltd. is a factory manufacturer that mainly produces advanced high technology products of R& D, manufacturing and sales of all-in-one computer, mini PC, touch screen monitor, smart teaching& conference panel and laptop computer. It is an integrity of factory and office with an area of over 2,000 square meters. Neat and huge work flow, well-trained and qualified staff enormously secure smooth and efficient production. Compared with traditional computer, our all-in-one computer and mini PC embody in obvious highlights of light weight, compact size, easy to carry, stable and powerful function, low consuming of electricity and radiation, healthy and friendly to environment. Our products have not only been widely applied to business, home leisure, commercial and industrial control use and finance end service, but also exported to many overseas countries, earning excellent reputations from customers. Under joint efforts of our professional R& D technology team, we will commit to manufacturing and providing more high end products to global market in the future

■ Production Process



■ Materials Arrangement



■ Inspection



■ Board Testing



■ Internal Assembly



■ External Assembly



■ Equipment Inspection



■ Aging



■ Finished Product

Core Expertise:

Specializes in the R&D, manufacturing, and sales of advanced high-tech products.

Key product lines include all-in-one computers, mini PCs, touch screen monitors, smart teaching & conference panels, and laptop computers.

Innovation-Driven:

Backed by a professional R&D team dedicated to continuous innovation and technological advancement.

Global Commitment:

Focused on delivering high-end, cutting-edge products to the global market.

Future Vision:

Committed to expanding its product portfolio and enhancing manufacturing capabilities to meet evolving market demands.

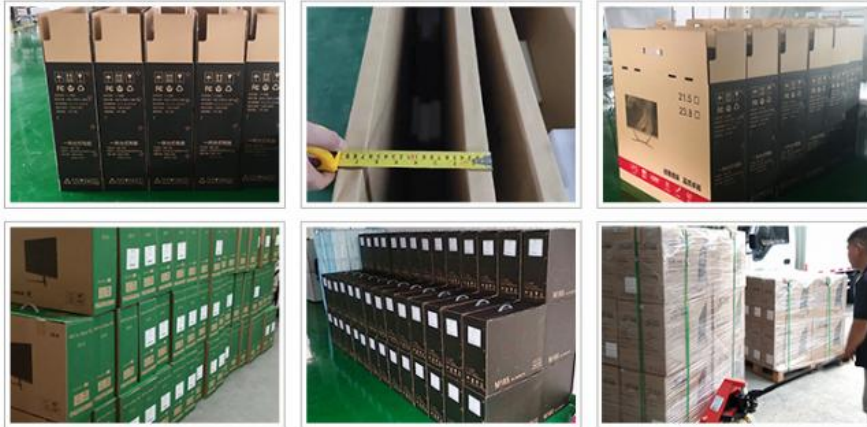
Quality Assurance:

Ensures superior product quality through rigorous R&D and state-of-the-art manufacturing processes.

Customer-Centric Approach:

Aims to provide tailored solutions and reliable products to meet diverse customer needs worldwide.

Packaging & Shipping



SHIPPING



Certifications

Our Certificates



FAQ

Q: Is your company a real manufacturer?

A: Our company is a professional manufacturer mainly producing all-in-one computer, mini PC, touch screen monitor, smart teaching& conference flat panel and laptop computer in Panyu District, Guangzhou City. You are mostly welcomed to visit us anytime.

Q: How does your factory do regarding quality control?

A: Quality is priority. We always attach great importance to quality controlling from the very beginning to the end and focus on every detail strictly during a variety of testings.

Q: Can I visit your factory for inspection?

Your visit is always welcomed.

Q: What if I'd like to use my own logo or design?

A: OEM& ODM customization is supported. Clients can enjoy this service and experience once requirements come.

Q: How long is delivery time?

A: The delivery is normally estimated within 2-15 days according to the order capacity

Q: What is your advantage?

A: 1. Direct factory, strong R&D team, customize as your request available.

2. 24 hours after-sale service, ensure solving your problems earliest.



Guangzhou Weipuna Technology Development Co., Ltd.



+86 135 4430 6128



allinonepccomputers.com

4th Floor, Building B7, Huachuang Animation Industrial Park, No. 9, Huateng Road, Shiji Town, Panyu District,
Guangzhou City, Guangdong Province, China