

230 W Esonic Hd High Brightness Win 10 Support 23.6 Inch All In One Computer For School

Our Product Introduction

for more products please visit us on allinonepccomputers.com

Basic Information

- Place of Origin: Guangdong, China
- Brand Name: WPNA
- Certification: CE/FCC/RoHs/ISO9001/CCC
- Model Number: F24/F27
- Minimum Order Quantity: 50 units
- Price: Negotiable
- Packaging Details: carton, bubble bag, stecth film
- Delivery Time: 15-30 WORKDAYS
- Payment Terms: L/C, D/A, D/P, T/T, Western Union, MoneyGram
- Supply Ability: 10000 Piece/Pieces per Month

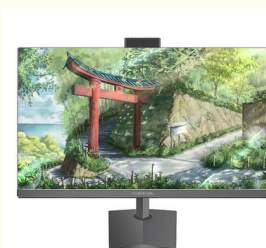


Product Specification

- Product Name: All-in-One PC
- Color: Black/White
- Series: For Gaming
- Processor Brand: Intel
- RAM: 4GB/8GB/16GB/32GB
- CPU: Core I3/i5/i7
- Memory: 128GB/256GB/512GB/1T/2T Optional
- Plugs Type: US, JP, CN, AU, UK, EU
- Operating System: Windows 10/11/Ubuntu/Linux
- Screen Type: Widescreen
- Warranty(Year): 1-Year
- After-sales Service: Call Center And On-line Technical Support, Onsite Training And Inspection, Others
- Highlight: **23.6 Inch All In One Computer, All In One Computer For School, 23.6 Inch All In One Computer**



More Images



Product Description

230 W Esonic Hd High Brightness Win 10 Support 23.6 Inch All In One Computer For School

Parameter

Model	F24
Size	23.6/27inch
Main Board	HM65/H81/H310/H410
Processor	CPU i3/i5/i7/i9
Memory	4G/8G/16G/32G DDR3 or DDR4
LAN	Gigabit Ethernet
Audio	High Fidelity Sound Output
USB	2*USB3.0 4*USB2.0
Hard Disk	128G/256/512G 1TBHDD/2TBHDD
Color	White
Adapter	12V 5A/19V 7.5V
Operating System	WIN7/WIN10
Resolution	1920*1080
Contrast	1000:1
Speaker	Stereo Sound Speaker

Selling Points

Flexible size selection: 24-inch and 27-inch screen sizes are available to meet the needs of different scenarios.

Customized touch function: Supports touch screen customization, more intuitive and convenient operation, and enhances the interactive experience.

Personalized configuration: Hardware can be customized freely according to needs, taking into account both office and entertainment needs.

Minimalist integrated design: Save space, smooth lines, and easily integrate into various environments.

High-definition display effect: High-quality screen brings clear picture quality, bright and realistic colors.

Multi-scenario application: Suitable for home, office, design, education and other purposes.

Efficient productivity: Optimize system performance and help multi-tasking more smoothly.

Rich interface expansion: Equipped with a variety of interfaces, easy to connect peripherals, strong scalability.

Energy saving and environmental protection: Low power consumption design, taking into account performance and environmental protection needs.

Quality after-sales service: Provide professional after-sales support, more worry-free use.

Technology

The precision integrated molding process ensures that the body is sturdy and thin; the full-lamination touch screen technology improves response sensitivity and display clarity; the modular design facilitates customized assembly, taking into account production efficiency and flexibility; it undergoes strict quality control tests, including durability, touch accuracy and display color calibration; environmentally friendly materials and low-energy consumption processes meet green manufacturing standards to ensure that the product is stable and reliable.

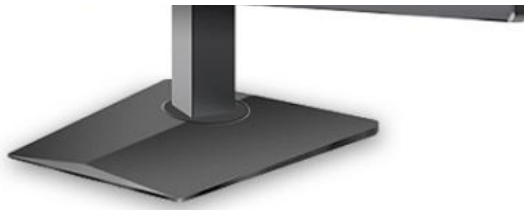
Theory

This all-in-one computer adopts a modular architecture design. Users can freely choose a touch screen or a standard screen according to their needs. The 24/27-inch panel is equipped with intelligent dimming technology, and the motherboard integration solution realizes hardware collaborative operation. The touch layer adopts a high-precision sensor matrix and an optimized human-computer interaction algorithm to ensure smooth response. The whole machine uses a unified heat dissipation duct design to balance performance and quietness.

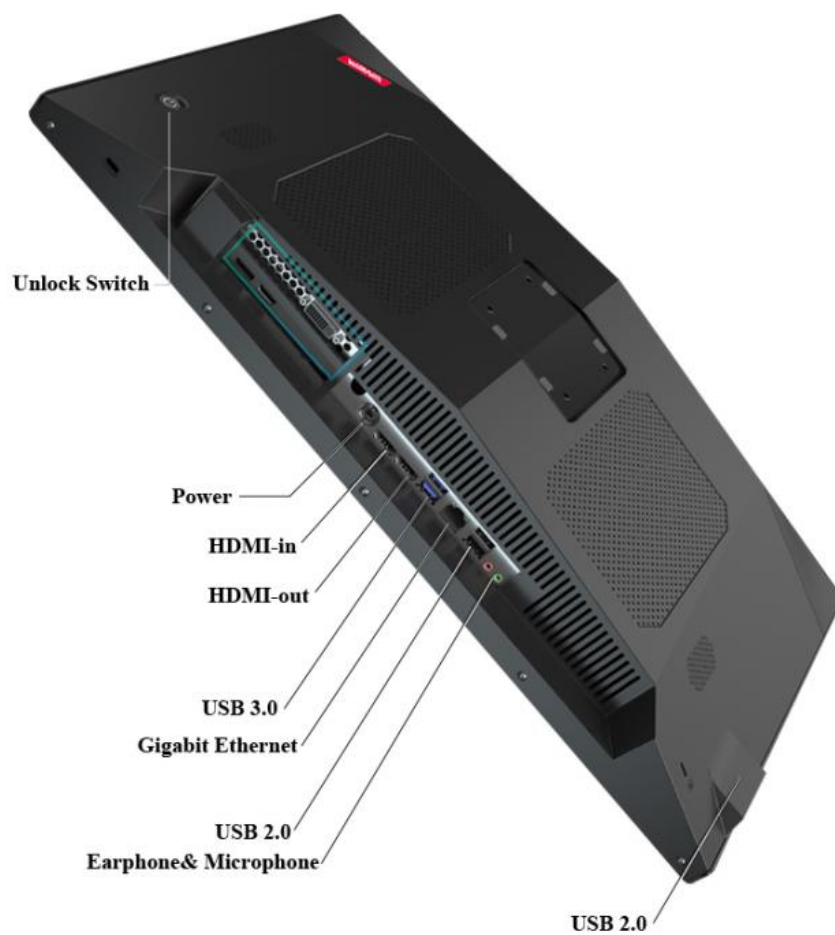
PRODUCTS SHOW







INTERFACE INTRODUCTION



SIZE

23.8 inch



APPLICATION SCENARIO



Usage

Home entertainment center: large touch screen, more immersive audio and video games.

Efficient office assistant: multi-tasking, improve work efficiency.

Creative design tool: precise touch, suitable for drawing and design.

Online education tool: interactive operation, more intuitive and convenient learning.

Business presentation selection: high-definition large screen, more professional and clear display.

Smart home control: integrated control, linked smart devices.

Lightweight workstation: meet professional needs such as programming and editing.

Multi-function entertainment terminal: support diverse applications such as video, games, and social networking.

Service

1. Professional after-sales service:

Provide comprehensive technical support and after-sales guarantee, including product maintenance, troubleshooting and upgrade services, to ensure that customers have a worry-free experience and win long-term trust.

2. Customized solutions:

According to customer needs, provide flexible product customization services, including appearance design, hardware configuration and function optimization, to help brands build unique competitiveness.

3. International standard certification:

The factory has passed ISO9001, CE, FCC and other international certifications to ensure that the products meet the strict

environmental protection and safety standards of the European and American markets, so that customers have no worries.

4. Fast delivery capability:

With advanced automated production lines and mature supply chain systems, we are able to achieve fast production and delivery to meet the high timeliness requirements of European and American customers.

5. One-stop manufacturing service:

We have independent hardware and computer manufacturing factories, providing one-stop services from parts production to whole machine assembly, ensuring efficient collaboration and strict quality control to meet the needs of European and American customers for high-quality products.

COMPANY PROFILE



INSIDE COMPANY



PRODUCTION PROCESS



OUR CERTIFICATES



FAQ

Question 1: Can you put my brand name (logo) on these products?

Yes. We can support OEM/ODM service, the process of customization is following:

- 1: provide your specific requirement.
- 2: our design engineer draw the design draft.
- 3: you confirm the design draft.
- 4: we start produce it.

Question 2: How much do I need to pay for your OEM service?

over 50 units we can support printing logo for you, over 100 units we can Custom shell and packing box for you.

(about the OEM service fee is the customer pay)

Question 3: What payment method do you accept?

T/T, Western Union, Cash

Question 4: What is the Minimum Order Quantity(MOQ)?

We can sell one piece sample for your test.

Question 5: What is the lead time of your products?

1-3 days for one sample, 15 working days for a large quantity.



Guangzhou Weipuna Technology Development Co., Ltd.



+86 135 4430 6128



allinonepccomputers.com

4th Floor, Building B7, Huachuang Animation Industrial Park, No. 9, Huateng Road, Shiji Town, Panyu District,
Guangzhou City, Guangdong Province, China