

## 14" Dual Touchscreen 2-in-1 Laptop Intel N150 CPU Windows 11

Our Product Introduction

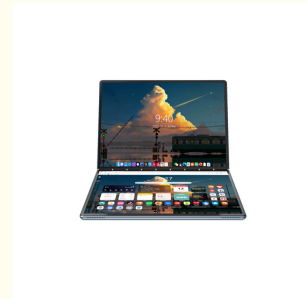
for more products please visit us on [allinonepccomputers.com](http://allinonepccomputers.com)

### Basic Information

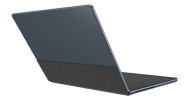
- Place of Origin: Guangdong, China
- Brand Name: Wpna
- Certification: ce, rohs
- Minimum Order Quantity: 1
- Delivery Time: 10-15
- Payment Terms: L/C,D/A,D/P,T/T,Western Union,MoneyGram
- Supply Ability: 1000



### Product Specification



### More Images



### Product Description

#### 14" 2-in-1 Laptop with Dual Touchscreens Intel N150 CPU Windows 11

Type	Details	Descriptions
Product Form	Product Form	2 in 1 Laptop
Dimensions	318.3X215.6X22.0MM	
Weight	1.95kg	
LCD	LCD Screen size	14"
Resolution	1920*1200	
Touchpad	Main touch screen	10 point Supports Microsoft MPP2.0 protocol
	Auxiliary touch screen	10 point
Pen	pressure-sensitive pen	1024-level pressure
Battery	Type	7.7V Lithium polymer battery

Our Product Introduction

	Capacity	6500mAh
	Working Life time	4~6 Hours

System hardware configuration

Type	Details	Descriptions
CPU	type	Intel® Processor N-series /Alder Lake-N N150 4 cores 4 threads, 6M cache
	Speed	Max Turbo Frequency 3.60 GHz
GPU	Type	Intel® Graphics
Memory	Capacity	DDR4 SO-DIMM memory slot * 1
Storage	Capacity	M.2 2280 SATA/NV *1
Camera	Front	1.0M
Speaker	Built-in	Built-in dual-channel speakers 8Ω 1W*2
Sensor	G-Senser	G-Senser

Network Connections

Type	Details	Descriptions
WIFI	AC WIFI	Wi-Fi 6 (802.11ax)
Bluetooth	BT version	Bluetooth 5.2

Interface Configuration

Type	Details	Descriptions
TYPE-C interface	full function	USB 3.2 Gen 1 Type-C/DisplayPort/Power (PD) input combo port *2
TYPE-C interface	USB	USB 2.0 TYPE-C *1
USB interface	USB	USB 3.0 TYPE-A *1
DC Interface	Charging interface	Outer diameter 3.5mm inner diameter 1.35mm

Necessary Accessories

Type	Details	Descriptions
Adapter	chager	DC12A 3A

Software Configuration

Type	Details	Descriptions
OS	Windows	Windows 10/11

Product Selling Points:

- WIFI 6
- Patented Dual-Screen Rotation
- Dual Touchscreens
- CPU Options: 12th Gen Intel Core (Mass Production) / Intel N150 (Mass Production)
- 0+0 RAM Configuration: User-upgradable SODIMM Slots (Max. 32GB)
- Storage: M.2 NVMe/SATA III Compatible Slot (Max. 2TB)
- Ports: 2x USB-C (1x Full-Function), 1x USB-A
- Keyboard: Optional Bluetooth Keyboard w/ Touchpad & Leather Case/Stand
- High-Resolution Display: 1920 x 1200
- Slider Leather Case: Orange / Gray
- Compact & Portable
- Multi-Scenario Device: Gaming, Video, Office, Trading, Design, Chat Apps. Dual-screen freedom doubles efficiency - use like two computers in one.

Original Design Product

## 双屏巨幕显示 视野更开阔

双14英寸 1920\*1200分辨率



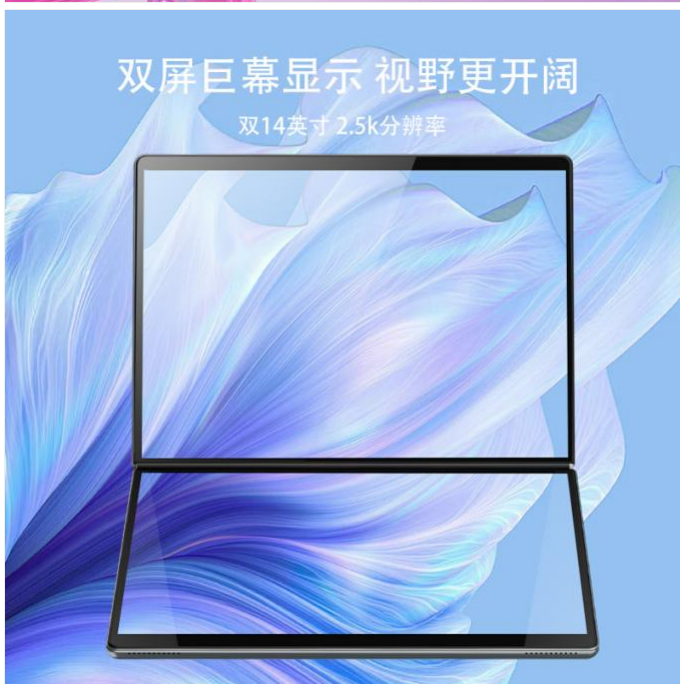
## 双屏巨幕显示 视野更开阔

双14英寸 2.5k分辨率



## 双屏巨幕显示 视野更开阔

双14英寸 2.5k分辨率



# 双屏协同 面面俱到

Dual screen collaboration covers all aspects



沉浸双屏使用：分屏办公/炒股



书籍形态：随意翻阅/躺着当书本使用



无限瀑布屏浏览：阅读长文档/长网页



虚拟键盘：节省更多空间，便捷打字



Company Information



## COMPANY PROFILE

Guangzhou Weipuna Technology Development Co., Ltd. is a factory manufacturer that mainly produces advanced high technology products of R& D, manufacturing and sales of all-in-one computer, mini PC, touch screen monitor, smart teaching& conference panel and laptop computer. It is an integrity of factory and office with an area of over 2,000 square meters. Neat and huge work flow, well-trained and qualified staff enormously secure smooth and efficient production. Compared with traditional computer, our all-in-one computer and mini PC embody in obvious highlights of light weight, compact size, easy to carry, stable and powerful function, low consuming of electricity and radiation, healthy and friendly to environment. Our products have not only been wildly applied to business, home leisure, commercial and industrial control use and finance end service, but also exported to many overseas countries, earning excellent reputations from customers. Under joint efforts of our professional R& D technology team, we will commit to manufacturing and providing more high end products to global market in the future



## Production Process



## Certifications



## Packaging & Shipping



## PACKAGING AND SHIPPING WPN®



## SHIPPING



[Click Here Back to Home](#)

## Our Services

Improving the quality of product according to your feedbacks

Arranging your orders as soon as possible.

Giving professional answers to your questions timely. (Including pre-sale and after-sale)

## FAQ

**Q: Is your company a real manufacturer?**

A: Our company is a professional manufacturer mainly producing all-in-one computer, mini PC, touch screen monitor, smart teaching& conference flat panel and laptop computer in Panyu District, Guangzhou City. You are mostly welcomed to visit us anytime.

**Q: How does your factory do regarding quality control?**

A: Quality is priority. We always attach great importance to quality controlling from the very beginning to the end and focus on every detail strictly during a variety of testings.

**Q: Can I visit your factory for inspection?**

Your visit is always welcomed.

**Q: What if I'd like to use my own logo or design?**

A: OEM& ODM customization is supported. Clients can enjoy this service and experience once requirements come.

**Q: How long is delivery time?**

A: The delivery is normally estimated within 2-15 days according to the order capacity

**Q: What is your advantage?**

A: 1. Direct factory, strong R & D team, customize as your request available.  
2. 24 hours after-sale service, ensure solving your problems earliest.

[Click here for More Information](#)



**Guangzhou Weipuna Technology Development Co., Ltd.**



+86 135 4430 6128



[allinonepccomputers.com](mailto:allinonepccomputers.com)

4th Floor, Building B7, Huachuang Animation Industrial Park, No. 9, Huateng Road, Shiji Town, Panyu District,  
Guangzhou City, Guangdong Province, China